

1 **Case control study on environmental, nutritional and enrichment-based risk factors for tail**  
2 **biting in long-tailed pigs**

3 PA Kallio<sup>a\*</sup>, A Janczak<sup>b</sup>, AE Valros<sup>a</sup>, SA Edwards<sup>c</sup>, M Heinonen<sup>a</sup>

4 <sup>a</sup> Department of Production Animal Medicine, PB 57, FIN-00014 University of Helsinki, Finland

5 <sup>b</sup> Animal Welfare Research Group, Department of Production Animal Clinical Sciences, Faculty of  
6 Veterinary Medicine and Biosciences, Norwegian University of Life Sciences (NMBU), Oslo,  
7 Norway

8  
9 <sup>c</sup> School of Agriculture, Food and Rural Development, University of Newcastle-upon-Tyne, UK

10 \*Corresponding author and contact: palvi.palander@helsinki.fi

11 **Abstract**

12 A case control study with a questionnaire was carried out to compare feeding practices, diet  
13 composition, environmental factors and management in 78 herds with or without a history of tail biting  
14 in undocked pigs in Finland. Tail biting was measured as the mean annual prevalence score of tail biting  
15 damage (TBD). Logistic regression parameters were calculated separately for piglet, grower, and  
16 finisher units. Risk factors for TBD found in the piglet unit were slatted floors, area of slats and  
17 increasing number of finisher pigs at that farm. In the grower unit slatted floors, area of slats, increasing  
18 number of finisher pigs at that farm, use of whey or wheat in the diet, and use of purchased compound  
19 feeds were associated with the risk for TBD. In the finisher unit, slatted floors, area of slats, increasing  
20 number of finisher pigs at the farm, absence of bedding, liquid feeding, several meals per day,  
21 specialized production type and group size of above nine pigs were found as risk factors for TBD. The  
22 nutritional risk factors seem to operate together with other risk factors, but with relatively low odds.  
23 The risk factors of undocked herds in this study seem to be similar to the risk factors from earlier studies  
24 of docked pigs. This study provides information which can be used to refine decision support tools for  
25 management of the potentially higher risk for tail biting among the long-tailed pigs, thus aiding  
26 compliance with EU law and increasing pig welfare.

27 **Keywords**

28 Animal welfare; Environment; Feeding; Pig; Risk factor; Tail biting

## 29 **Introduction**

30 Tail biting is a behaviour giving rise to serious animal welfare and economic problems in modern pig  
31 production. Many environmental, feed-related or animal based risk factors increase the likelihood of  
32 onset of tail biting (see review from Taylor *et al* 2010). From an ethological point of view, tail biting  
33 has been connected to redirection of normal foraging or exploration behaviour to other pigs' tails (e.g.  
34 Schröder-Petersen & Simonsen 2001). The absence of suitable foraging material – feed, bedding or  
35 enrichment - is shown to make pigs redirect their exploration behaviour from the ground to other pen  
36 items and pen mates (Averos *et al* 2010), behaviours that appear together with increased levels of tail  
37 biting behaviour (Day *et al* 2002). Solutions that satisfy pigs' needs for exploration, rooting and  
38 foraging are preferred in order to decrease the tail biting risk, but are not always practical from a  
39 farmers' point of view (D'Eath *et al* 2014).

40 Whilst there are many anecdotal reports of nutritional risk factors for tail biting, both quantitative and  
41 qualitative in nature, there has been little critical research on this subject in epidemiological studies.  
42 Results which associate tail wounds or tail biting behaviour to limited feeding space, feeding frequency,  
43 deficits in diet quality or quantity, form of the feed or dysfunction of the feeder system do exist (Fraser  
44 1987; Fraser *et al* 1991; Beattie *et al* 2005; Botermans & Svendsen 2000; Hunter *et al* 2001; Schröder-  
45 Petersen & Simonsen 2001; McIntyre & Edwards 2002; Moinard *et al* 2003; Holmgren & Lundeheim  
46 2004; Hessel *et al* 2006; Smulders *et al* 2008; Taylor *et al* 2012; Temple *et al* 2012). In many cases  
47 these come from experimental studies and there is limited evidence of their importance under practical  
48 farming conditions where multiple risk factors are present simultaneously, as remarked previously by  
49 Smulders *et al* (2008). The combined effect of environmental and nutritional limitations at farm level  
50 needs special attention in order to comprehensively measure the risk for tail biting.

51 Most of the epidemiological investigations are from short-tailed pigs as tail docking is widely carried  
52 out in the majority of European countries. There are few epidemiological studies or meta-analyses of  
53 the relationship between tail biting behaviour or tail damage and farm environment and feeding in long-

54 tailed pigs. It is seldom mentioned, even in scientific papers, whether the pigs were tail-docked or not,  
55 but many studies are done in countries where docking is common. Only Holmgren & Lundeheim (2004)  
56 have used farms with long-tailed pigs as the sole source of an epidemiological study. Furthermore,  
57 Hunter *et al* (2001) and Moinard *et al* (2003) compared the risk of tail biting in??? docked and undocked  
58 pigs. In these studies it is likely that a variety of confounded factors influenced the risk of tailbiting and  
59 thereby whether or not farmers made the decision to dock or not. On the basis of these (these studies or  
60 one of them; which study is not clear based on the references) studies Moinard *et al* (2003) found that  
61 tail docking was positively associated with the magnitude of tail biting risk.

62 Since the European Union has a stated objective of encouraging countries to reduce tail docking  
63 (European Commission 2013), the need for knowledge of how to manage long-tailed pigs is growing.  
64 However, tail docking itself has negative implications for pig welfare through the experience of short  
65 and possibly longer term pain (Sutherland & Tucker 2011). Furthermore, tail docking does not  
66 guarantee pigs safety from tail biting. Since in Finland tail docking is forbidden, but pigs are mostly  
67 raised in a way similar to the majority of pig-raising in the EU contrary to countries who have a more  
68 restrictive legislation towards both the tail docking and pig welfare, Finland makes an interesting model  
69 country for studying risk factors for tail biting in long-tailed pigs.

70 This study aims at measuring the magnitude of tail biting damage risk caused by feeding practices,  
71 environmental predisposal (the feeding study) and diet composition (the diet study) concentrating on  
72 undocked pig populations in Finland. The study method is a case-control questionnaire between herds  
73 with or without a history of tail biting using odds ratios to measure the magnitude of the risk. Based on  
74 the ethological motivational background of tail biting, it is hypothesised that the risk factors are identical  
75 to those in docked pig populations but that their magnitude might be elevated.

## 76 **Material and methods**

### 77 *Study design and herds*

78 This case control study and questionnaire investigated environmental and nutritional factors associated  
79 with tail biting on Finnish farms. Tail biting was diagnosed as the prevalence of pigs scored as having

80 tail damage during farm inspections. The farms were selected from the Finish pig health register called  
81 Sikava (run by The Association for Animal Disease Prevention ETT ra, PL 221, 60101 SEINÄJOKI;  
82 www.sikava.fi), where in total of 1954 farms were included at the time of the study. Sikava requires  
83 quarterly veterinary health care visits to estimate the frequency of tail biting damage (TBD) at the time  
84 of the visit, though some farms were visited more than and some less than four times a year. TBD was  
85 originally recorded using a 5 point scale describing the amount of TBD: 0= data missing, 1=none, 2=  
86 some TBD (1-5% of the pigs), 3= plenty (6-19% of the pigs) and 4= lots (over 20% of the pigs). TBD  
87 was estimated using only one estimate covering all the units and, therefore, all the pigs at farm  
88 (independent of the age of the pigs), so there was no possibility to know the prevalence of TBD within  
89 different units (piglet, grower or finisher unit). In this study we used TBD data which was gathered over  
90 two separate 12 month periods – year one (Y1) and year two (Y2) – with each farm included in only  
91 one year. This yearly period for Y1 was from 1.5.2008 until 30.4.2009 and for Y2 it was from 1.10.2009  
92 to 30.9.2010. Farms with TBD recordings of all or single values of 0 were excluded from the data  
93 analysis. A TBD mean was calculated for every farm as the average of the yearly evaluations. TBD  
94 mean  $\pm$  standard deviation of all farms was  $1.84 \pm 0.49$  in Y1 (n=1954 farms) and  $1.82 \pm 0.48$  in Y2  
95 (n=1801 farms). The median of all observations was 2.00 within both studies (Figure 1).

96 TBD status for farms was used to designate them as either case or control farm. Case farms had a TBD  
97 mean value of  $>2.6$  or  $>2.1$  in Y1 and Y2, respectively. Reason for changing the lower TBD limit for a  
98 case farm status from 2.6 into 2.1 was because there were not enough farms having a TBD mean above  
99 2.6 in Y2. In control farms no TBD was observed at the time of inspections and therefore they all had  
100 TBD mean of 1.0 (limits for TBD status shown in figure 1).

#### 101 *Invitation of herds for the feeding study*

102 All together 289 case farms and 326 control farms within the Finnish Sikava-records fulfilled the above  
103 mentioned criteria and were invited to participate in the feeding study by letter. In Y1, a first reminder  
104 was given by letter and a second one by phone. No reminders were used in Y2 because in Y2 the purpose  
105 was not to achieve any specific number of farms but to increase overall sample size for Y1. Apart from

106 the reminders, the methods of the study and the questionnaire used were the same in both the years.  
107 Each farm was invited only once in the study, even if it fulfilled the criteria for both years.

#### 108 *Invitation of herds for the diet study*

109 All invitations for the diet study were sent in year 2011. This happened at the same time as Y2 farms  
110 were asked to join the feeding study. Those farms that had already participated the feeding study in Y1  
111 were asked to supplement their participations with the diet questionnaire in the internet at this point.  
112 The invitations were sent by letter, and no reminders were sent. The total amount of farms invited to  
113 the diet study was 350 from Y2 farms and 49 from Y1 farms, from which 210 were case farms and 189  
114 control farms.

#### 115 *Data collection*

##### 116 *Feeding study*

117 An internet-based questionnaire (QuestBack™) was used to collect the data unless the farm asked for  
118 an identical paper version. Seven farms were given the possibility to complete a pilot version of the  
119 questionnaire, after which final modifications were made for the main study. Questions were divided  
120 into the following categories: general questions (farm-related), environmental questions, feeding-  
121 related questions (feeds and feeding technique), questions about enrichments, and other questions; these  
122 category classes were not shown to the respondents. All questions were asked separately for piglet unit  
123 (pigs from birth to weaning, approx.. 0-10 kg), grower unit (pigs after weaning but before finishing,  
124 approx. 10-25 kg) and finisher unit (pigs from approx. 25 kg to slaughter), based on the farmers'  
125 answers to questions regarding the type of production that they had, and this was clearly pointed out to  
126 the respondents. A complete list of the questions is shown in supplementary material 1. There were  
127 primary category questions that every farm answered. In addition, there were detailed sub category  
128 questions that were visible or invisible, depending on the farmers' answers to the primary questions.  
129 Where the sample size was insufficient for meaningful interpretation (power), these sub category  
130 questions were not further analysed. Tail biting status was evaluated through the questionnaire in order  
131 to compare the farmer's opinion about the state of their farm to the data obtained through the official

132 Sikava-recordings. Farms with major health problems would have been removed from the study, but  
133 there were none.

#### 134 *Diet study*

135 In the diet study the questions were asked as a part of the internet-based questionnaire used in the  
136 feeding study for Y2 farms or a separate paper version for Y1 farms, both at the same time (in year  
137 2011). Within the diet study we asked for information regarding whether the farm used the following  
138 products, with questions asked separately for piglet, grower and finisher units: barley, oats, wheat, rye,  
139 maize, other grains, soybean, rape or turnip rape, peas, barley protein concentrate, whey (wet or dry),  
140 protein concentrate, limestone, phosphate, salt (*NaCl*), mineral mixture, vitamin mixture, amino acid  
141 mixture, or purchased compound feed (PCF). For PCF, we asked questions allowing us to identify the  
142 manufacturer, name of the product and production period. The recipes for PCF were provided by feed  
143 manufacturers (Hankkija Agriculture Ltd, Raisioagro Ltd, A-rehu Oy). For all type of feeds (farms´  
144 own mixture or PCF) statistical analyses were done using only the data of ingredients and not the  
145 accurate percentage of these in recipes.

#### 146 *Data management and statistical analysis*

147 Within the feeding study, the total response rate was 19 % in Y1 and 12 % in Y2 giving a total of 90  
148 farms. Within the diet study, the total response rate was 13 %. Reasons for exclusion of herds from the  
149 final dataset were changes in management and feeding practices (8 farms) during the time period data-  
150 recordings were collected. Four farms were removed for other reasons like inconsistency of their  
151 answers or answering twice. Furthermore, if the questionnaire was incorrectly completed, the farm´s  
152 answers for that particular production stage (piglet, grower or finisher stage) were removed from the  
153 study (N=2, 9, 9 stages, respectively), but the farm as whole was not excluded. The final data consisted  
154 of a total of 78 farms from which farms included in the diet study are a subset (n=50). Within the feeding  
155 study, 46 farms raised piglets (15 cases, 31 controls), 39 raised growers (14 cases, 25 controls) and 61  
156 raised finishers (36 cases, 25 controls). Within the diet study, 24 farms raised piglets (9 cases, 15  
157 controls), 29 raised growers (10 cases, 19 controls) and 44 raised finishers (24 cases, 20 controls).

158 Sample size calculations were done beforehand (only the feeding study) and again afterwards (both the  
159 studies). Intended power was 80% and confidence of 95 %. After completing data collection and  
160 excluding farms according to criteria listed above the ratio between case and control farms was 1:1 as  
161 intended beforehand within both the studies.

162 Explanatory variables (questions) were first analysed against TBD (case-control) - status using cross  
163 tabulation to determine if enough observations in each class were obtained and to identify the reference  
164 category. Answer choices within a question were combined into new groups if this was needed in order  
165 to obtain enough observations within cells and if appropriate. Only the final combined categories for  
166 each variable are presented within the results. Pearson chi-square was used for categorical variables  
167 with only two levels, the likelihood ratio chi-square test for variables with more than two levels and  
168 one-way Anova for continuous variables. After this, univariate logistic regression was applied to obtain  
169 unadjusted odds ratios (OR) and 95 % confidence intervals (CI) for those variables significantly  
170 associated with TBD status ( $P < 0.05$ ). Logistic regression parameters were calculated separately for  
171 piglet, grower, and finisher phases. The model fit was tested using the hit ratio (% of observations  
172 estimated correctly) and the model coefficient of determination by Cox & Snell's  $R^2$ .

173 All significant variables' multicollinearity and the type of association was tested using stratified  
174 bivariate cross tabulation with status as outcome variable. Furthermore, the number of finisher pigs at  
175 farm was tested for associations with all other significant risk factors using one-way Anova. If there  
176 was no data given on number of animals at farm, imputation was made using the mean of all farms.  
177 Multivariate logistic regression could not be done, because factors with multicollinearity were equal  
178 regarding their biological relevance but might not have mirrored the same biological mechanism, so no  
179 variable could be excluded from the model before another one without at the same time increasing the  
180 risk for incorrect choice.

181 SPSS 18.0 was used for all statistical analyses excluding sample size estimates and detailed variable  
182 multicollinearity. Variable interaction and confounding were tested with Epi Info 7.1.0.6 (Centers for

183 Disease Control and Prevention 2012) using StatCalc and 2 x 2 tables programs, and with PS – Power  
184 and Sample Size Calculation (Dupont & Plummer 1990).

## 185 **Results**

### 186 *Feeding study*

187 General information about farms is given in table I. In this table the information about tail biting at the  
188 farm is the farmer’s opinion of the situation. Table II shows the results of the univariate contingency of  
189 the variables found to have a significant association with TBD status of the farm (case or control). In  
190 all the units these risk factors were fully or partly slatted pen floor compared to solid floor (SF) and the  
191 area of slatted floor which was further divided into three categories (1 – 49 % or 50 – 100 % slats  
192 compared to solid floor, ASF), and the increasing number of finisher pigs at the farm. In addition, only  
193 in the finisher unit we found more than 10 pigs compared to at the most of 10 pigs in a pen (NP), use  
194 of liquid feeding compared to dry feeding (LF), absence of bedding material compared to presence of  
195 it (BM), and type of production that had only finisher pigs compared to keeping the same pigs from  
196 birth to slaughter (TP) to be risk factors for TBD case status. There was no significant difference in  
197 TBD status when comparing “feeding in meals” and “feed present all the time” *per se*. However, after  
198 recoding the variables, feeding *ad libitum* (continuous) incurred an equal risk to one or two meals a day,  
199 resulting in “more than two meals offered a day compared to one or two meals or *ad libitum* feeding  
200 without separate meals” (NM) as a risk factor. In table III measures of the magnitude of the risk (odds  
201 ratios with confidence intervals), predictions of the model fit and model derived significances for each  
202 individual risk factor for piglet, for? weaner and finisher units from univariate logistic regression are  
203 presented.

204 The following variables (risk factors) were observed to have multicollinearity with each other in the  
205 presence of TBD status as the outcome variable: SF to LF, SF to BM, SF to NM, NM to LF, NM to  
206 BM, NM to TP, TP to NP, and TP to LF. These observed associations are shown in figures 2a-2h. We  
207 tested the nature of the association (whether the two variables were interacting or one was a confounding  
208 factor) using stratification. In addition, all units were separately associated with increased risk for TBD



209 with increasing number of finisher pigs at the farm. However, it was impossible to use this variable as  
210 a covariate in univariate logistic regression models because the number of finisher pigs at the farms was  
211 found to be associated with SF (F=5.8, df=1, P<0.05), TP (F=14.7, df=1, P<0.001), LF (F=17.8, df=1,  
212 P<0.001) and NM (F=7.4, df=1, P<0.01). The following reported risk factor collinearities are from the  
213 finisher units. In the piglet and grower units, there were no further risk factor interactions to be  
214 examined.

215 **In the finisher unit**, having slatted floors increased the risk for TBD. Multicollinearity of SF to BM,  
216 NM and LF was found. After adjusting SF for BM, the risk of TBD associated with slatted flooring was  
217 reduced in farms using bedding (OR=6.5 CI 1,5 – 28.8;  $\chi^2= 6,74$ ; P<0.05; n=41) but was not evident in  
218 farms not using bedding (OR=8.0; CI 0.3 – 184.4;  $\chi^2 = 2,14$ ; P>0.1; n=20) compared to all farms having  
219 slatted floors (figure 2b). After adjusting SF to NM, farms with “1 or 2 meals or ad libitum feeding”  
220 tended to have lowered risk associated with SF (OR=4.4 CI 0.8 – 23.6;  $\chi^2 = 3,24$ ; P<0.1, n=27) in  
221 contrast to farms having “more than two meals” where OR increased (OR=9.2 CI 1.3 – 64.9;  $\chi^2 = 6,05$ ;  
222 P<0.05, n=34) compared to all farms having slatted floors (figure 2a). Furthermore, SF was found to be  
223 confounded with LF. In farms not having liquid feeding, the risk of TBD associated with SF was  
224 reduced (OR = 7,3 CI 1,5 – 36,7;  $\chi^2 = 6,5$ ; P < 0.05), but this effect (see previous comments) was not  
225 evident in farms not using liquid feeding (OR = 4,0 CI 0,45 – 35,8;  $\chi^2 = 1,7$ ; P > 0.1) compared to all  
226 farms having slatted floors (figure 2c).

227 Absence of bedding material in the finisher unit was associated with increased risk for TBD, although  
228 BM was confounded with SF. In farms with slatted floors, there was a decreased risk for TBD (OR  
229 =10,7 CI 1,21 – 93,7;  $\chi^2 = 6,1$ ; P < 0.05; n = 42) compared to all farms when BM was not used.. In  
230 finisher units with solid floors, there only tended to be an effect of not using bedding (OR = 8,7 CI 0,58  
231 – 130,1;  $\chi^2 = 3,0$ ; P < 0.1; n = 19) (figure 2b).

232 Number of meals (NM) had a significant effect on TBD in the finisher unit. *Ad libitum* feeding was  
233 described as “having free access to feeds all the time” and meal feeding as restricted feeding where  
234 “feed was not present all the time” even though the single meal size could have been calculated

235 according to the appetite of the pigs. NM showed multicollinearity to LF, BM, TP and SF. After  
236 adjusting NM to LF, farms with liquid feeding tended to have increased risk for TBD if pigs were fed  
237 more than twice a day at the same time (OR = 8,4 CI 0,63 – 112,1;  $\chi^2 = 3,3$ ;  $P < 0.1$ ;  $n = 29$ ). There was  
238 no interaction effect in farms not having liquid feeding (OR = 1,4 CI 0,3 – 7,0;  $\chi^2 = 0,17$ ;  $P > 0.1$ ;  $n=32$ )  
239 compared to all pigs being fed more than twice a day (figure 2d). When NM was adjusted to BM, in  
240 farms with absence of bedding material the association of NM to TBD could not be calculated because  
241 of a low number of observations (OR= undefined;  $\chi^2 = 0,74$ ;  $P>0.1$ ;  $n=20$ ) but in farms with presence  
242 of bedding material there was a protective effect of BM in “more than twice fed pigs” (OR = 4.6 CI  
243 1.2 – 17.2;  $\chi^2 = 5,33$ ;  $P < 0.05$ ;  $n=41$ ) (figure 2h). When having all age of pigs at farm there was a  
244 tendency for lowering the risk of NM (OR = 3,5 CI 0,8 – 15,4;  $\chi^2 = 0,86$ ;  $P < 0.1$ ;  $n = 34$ ), but in farms  
245 having only finisher pigs there was no interaction with NM (OR = 2,3 CI 0,3 – 17,6;  $\chi^2 = 0,63$ ;  $P > 0.1$ ;  
246  $n = 27$ ) (figure 2f). In farms with slatted floors the risk caused by feeding more than twice a day tended  
247 to be lowered (OR = 3,5 CI 0,8-14,5;  $\chi^2 = 3,02$ ;  $P < 0.1$ ;  $n = 42$ ) compared to all farms fed as described  
248 above. There was no interaction effect of solid floors on NM (OR = 1,7 CI 0,2 – 14,1;  $\chi^2 = 0,22$ ;  $P >$   
249  $0.1$ ;  $n = 19$ ) (figure 2a).

250 Type of production (TP) was associated with TBD in the finisher unit. However, TP had an interaction  
251 with LF and NP. After adjusting TP to NP, when having “less than 10 pigs per pen” this risk of having  
252 only finisher pigs elevates compared to all group sizes (OR = 12.0 CI 1.2 – 117.4;  $\chi^2 = 6,0$ ;  $P < 0.05$ ;  
253  $n=31$ ). In farms having “10 or more pigs per pen” there was no interaction with TP (OR = 0.6 CI 0.1 –  
254 3.6;  $\chi^2 = 0,34$ ;  $P > 0.1$ ;  $n=30$ ) (figure 2g). Adjustment of TP to LF tended to increase the risk for TBD  
255 in finishing farms with no liquid feeding (OR= 4.4 IC 0.7 – 27.8;  $\chi^2 = 2,79$ ;  $P < 0.1$ ;  $n=32$ ) compared  
256 to all finishing farms. There was no interaction effect with finishing farms using liquid feeding (OR=  
257 0.9 IC 0.1 – 5.6;  $\chi^2 = 0,03$ ;  $P>0.1$ ;  $n=29$ ) (figure 2e).

258 Use of liquid feeding in the finisher stage was significantly associated with TBD. LF had interaction  
259 with NM and TP. There tended to be increased risk for TBD in farms with liquid feeding and more than  
260 two feeding times (OR = 4.2 CI 0.8 – 22.9;  $\chi^2 = 2,98$ ;  $P < 0.1$ ;  $n=34$ ) compared to all liquid fed pigs. In  
261 farms having “1 or 2 meals or ad libitum feeding” we found no interaction with LF (OR = 0.7 CI 0.1 –

262 8.8;  $\chi^2 = 0,08$ ;  $P > 0.1$ ;  $n=27$ ) (figure 2d). Within the interaction of LF and TP, having all age of pigs at  
263 a farm where finisher pigs were fed with liquid feed increased the risk for TBD (OR = 6.2 CI 1.1 – 36.6;  
264  $\chi^2 = 4,64$ ;  $P < 0.05$ ;  $n=34$ ) compared to all farms having liquid feeding. In farms having only finisher  
265 pigs there was no interaction with LF in the finisher unit (OR = 1.2 CI 0.2 – 8.2;  $\chi^2 = 0,03$ ;  $P > 0.1$ ;  
266  $n=27$ ) (figure 2e).

267 The number of pigs in one finisher pen (NP) was associated with the risk of TBD, when “less than ten  
268 pigs”, “11-19 pigs” and “20 or more pigs” per pen were used as variable categories in the raw data (the  
269 questionnaire). The prevalence of having more than 20 pigs per pen turned out to be only five per cent.  
270 However, there was an interaction between NP and TP. The risk caused by larger group size (10 – 19)  
271 was higher in farms having pig of all age (OR = 8.0 CI 1.4 – 46.8;  $\chi^2 = 6,17$ ;  $P < 0.05$ ;  $n=34$ ) compared  
272 to all production types. In farms with only finisher pigs there was no interaction effect on risk of NP  
273 (OR= 0.4 CI 0.0 – 4.0;  $\chi^2 = 0,67$ ;  $P > 0.1$ ;  $n=27$ ) compared to all production types (figure 2g).

#### 274 *Diet study*

275 No association was found in piglet and finisher units between TBD status of the farm (case or control)  
276 and use of different feed ingredients ( $P > 0.05$ ). Within the grower unit we found use of purchased  
277 compound feed (PCF), whey and wheat to be associated with TBD status (in table IV). The use of whey  
278 and presence of liquid feeding was investigated because farms that have liquid feeding often use  
279 industrial by-products like wet whey as an ingredient of the liquid feed mixture, but there were only  
280 two farms having LF in the grower unit and neither of them used whey, so there was no confounding  
281 found. The interaction between use of PCF and use of whey or wheat in the grower unit seems likely,  
282 but this was impossible to test statistically due too low amount of farms divided according to use of  
283 PCF. In farms using PCF, 46 % and 93 % had whey or wheat in the grower diet, respectively. From  
284 those farms, whey was used in 4 out of 7 case farms and in 2 out of 6 control farms. Wheat was used in  
285 7 out of 7 case farms and in 6 out of 7 control farms. The odds ratios of statistically significant diet  
286 related risk factors are reported in table V.

#### 287 **Discussion**

288 In this study we used the Finnish pig health register “Sikava” to select case farms that had more than  
289 average tail biting damage, and control farms with no tail biting damage observed, and asked through  
290 an internet questionnaire about their farm management factors related to feeding, environment and diet  
291 choices for pigs of different age categories. The aim was to identify and quantify risk factors that might  
292 be the potential source of tail biting at these farms. We found environmental (slatted floors, the slatted  
293 area, absence of bedding, moderate to large group size), management based (type of production, number  
294 of finisher pigs at farm) and feeding related (liquid feeding, number of separate meals, use of whey or  
295 wheat or PCF for grower pigs) risk factors, mostly located to the finisher unit. The magnitude of the  
296 risk seemed to be higher within the first category (environment), but several interaction effects  
297 complicated interpretation of the findings.

#### 298 ***Risk factors from the feeding study***

##### 299 *Environmental risk factors*

300 Slatted floors were found to be associated with increased risk for TBD within each production stage in  
301 this study. Completely solid floors were rare (7 – 20 %) within the case farms, whereas they were  
302 relatively common (52 – 77 %) within all the control farms in each production stage. Solid floors are  
303 shown to decrease time spent expressing social behaviours (Averos et al 2010). In weaned and finisher  
304 pigs, the risk associated with slatted floors also increased as the area of slats increased, although the  
305 confidence intervals of odds ratios for slatted areas were wide. Fully slatted floors were reported to  
306 increase tail biting in contrast to partly slatted floors by Ruitkamp (1985) and Madsen (1980). In  
307 contrast, we found that in unweaned piglets, having 1-49 % slats in the pen area increased the risk for  
308 TBD more than having at least half slatted floors compared to solid floors in the piglet stage. This  
309 observation cannot be easily explained, but may result from only a few farms having a slatted area of  
310 more than 49 %. In contrast to our results, Moinard *et al* (2003) found a significant difference only in  
311 the comparison between presence and absence of slats, not in the area of slats.

312 We found absence of bedding material in the finisher unit to be a risk for TBD, corresponding well to  
313 previous studies (Beattie *et al* 1995, Hunter *et al* 2001, Moinard *et al* 2003). Lack of bedding was

314 marked as having the highest OR among finisher unit risk factors. In this study, “presence of bedding”  
315 was clarified in the questionnaire as “having bedding material put on the pen floor suitable to absorb  
316 the moisture; not only for enrichment or to play with”. None of the studies cited above, defined the  
317 amount of bedding provided to pigs. Even moderate bedding decreased the tail lesion index of undocked  
318 finisher pigs in the study of Munsterhjelm *et al* (2009), which is the amount of bedding used in most  
319 cases on Finnish farms. Besides, provision of moderate straw resulted in lower probability of TB than  
320 the provision of deep straw(Hunter *et al* 2001).

321 In the report from EFSA (2007), risk caused by slatted floors was not reported individually but in  
322 connection to use of straw, which might be of practical relevance. These kind of feeding and  
323 environment related relationships between multiple factors affecting tail biting behaviour are well  
324 described in the review by D'Eath *et al* (2014). In our study, there were many interaction effects  
325 between floor type, use of bedding material and management of feeding adjusting the odds of single  
326 risk factors for TBD. The risk associated with slatted floor structure increased in magnitude when pigs  
327 were fed more than twice a day. When pigs are fed in many separate small meals they might experience  
328 post-meal hunger resulting in increased expression of foraging behaviour. In an environment where the  
329 floor is slatted, there is usually a lack of sufficient amounts of chewing material on the floor for pigs to  
330 fulfil their need to forage and explore, leading pigs to redirect their appetitive and exploratory  
331 behaviours from the ground to other animals (Averos *et al* 2010). This attentional shift increases the  
332 risk for two-stage tail biting behaviour (Taylor *et al* 2010). In addition, escalated competition at feeders  
333 (possibly multiple times a day), is a potential source of sudden-forceful tail biting (see Taylor *et al*  
334 2010). In a situation where there is competition for feed, edible bedding materials as a source of non-  
335 nutritional fiber can also work as a buffer against digestive tract discomfort (Taylor *et al* 2010) and  
336 provide satiety for the pigs (Bolhuis *et al* 2010). This might explain the additive effect of the number  
337 of meals and slatted floors, and the protective effect of bedding in pens with slats, on the risk for TBD.  
338 Moderate to large group size in pens was associated with increased risk of TBD, although in this study  
339 the majority of farms (95 per cent) reported having group size below twenty pigs (original data, not  
340 shown). Holmgren & Lundeheim (2004) who found that, an increase of one pig to the group increased

341 the prevalence of tail biting by +0.2 % with long-tailed pigs, suggested that this was a consequence of  
342 an increase in the number of potential victim pigs. Crowding and large group size increases the exposure  
343 of one pig to other pig's bodies and tails (Fraser 1987, D'Eath *et al* 2014), and makes the copying of  
344 biting behaviour more likely (Fraser 1987). Furthermore, pathogens spread more rapidly with multiple  
345 animals close to one another, and tail biting has been shown to be associated with general suppressed  
346 health (Niemi *et al* 2011, Moinard *et al* 2003, Schrøder-Petersen & Simonsen 2001), and increased  
347 respiratory diseases (Moinard *et al* 2003; Sihvo *et al* 2012; Munsterhjelm *et al* 2013) and mortality  
348 (Moinard *et al* 2003). In contrast to our results, Schmolke *et al* (2003) found no effect of group size  
349 between ten or more pigs on TBD. The potential risk of large group size increasing tail biting behaviour  
350 is closely linked to limitations of feeder space and increased stocking density (Moinard *et al* 2003,  
351 D'Eath *et al* 2014). The first one (large group size) was not identified as a risk factor in this study and  
352 the second one (stocking density) was not investigated. However, 78 percent of finisher farms used feed  
353 troughs and the great majority of them (92 %) reported that finisher pigs were able to eat simultaneously  
354 for the whole growing period.

#### 355 *Feeding related risk factors*

356 Although this study aimed at identifying potential feeding related risk factors using detailed questions  
357 about feeding technique, type of feed and manufacturing of the feed mixtures, only two feeding related  
358 risk factors were found: the use of liquid feed and offering more than two meals a day in the finisher  
359 unit. Feeding related risk factors were not found in the piglet or grower units.

360 Jericho and Church (1972) was the first to note that *ad libitum* feeding reduces tail biting. In this study  
361 meal feeding with more than two meals a day in the finisher unit was observed to increase risk for TBD.  
362 We suggest that our result might be a consequence of dividing the same amount of feed into several  
363 small portions, possibly resulting in pigs remaining hungry after a meal, as described earlier in this  
364 discussion. Increasing the number of meals has also been connected with growing competition at the  
365 feeder, antagonistic behaviour and increased skin lesions (Hessel *et al* 2006). Temple *et al* (2012) found  
366 time-restricted feeding systems to be associated more with severe wounds than *ad libitum* feeding

367 systems. Furthermore, an increase in the frequency of feeding from two to four times a day induced  
368 larger relative risk for tail biting than feeding only once or twice a day (Temple *et al* 2012), which  
369 strengthens the conclusion that multiple, time-restricted feeding might increase the risk of tail biting in  
370 our study case farms.

371 Similar to our result, liquid feeding is recognized to predispose to tail biting in studies by Bracke *et al*  
372 (2004) and Temple *et al* (2012), although controversial results exist too (Hunter *et al* 2001; Moinard *et*  
373 *al* 2003; Smulders *et al* 2008). Liquid feeding might despite of its beneficial effects on growth, nutrient  
374 utilisation and gastrointestinal tract health (see Scholten *et al* 1999 for review) be a potential source of  
375 tail biting because synthetic amino acids may be degraded during storage of fermented feed (Pedersen  
376 *et al* 2002), and lack of protein or amino acids is associated with attraction to the taste of blood (Fraser  
377 *et al* 1991, McIntyre & Edwards 2002) and tail biting (Jericho & Church 1972). Diet nutrient content  
378 is also variable with liquid feeding due to industrial by-products available which is known to induce tail  
379 biting behaviour (Fraser 1987). Managing the liquid feeding system requires more engineering skills  
380 from the farmer (de Lange *et al* 2006) than..... There is a source of error in managing the mixing  
381 process and delivering homogenous feed to all the pens in the building (de Lange *et al* 2006). The  
382 decreased dry matter content of feed provided in some pens can prevent satiety after a meal. Reduced  
383 satiety can increase restlessness and aggressive behaviour (Bolhuis *et al* 2010), which are behaviours  
384 also observed in tail biting pens (Zonderland *et al* 2011).

385 The risk for TBD caused by the use of liquid feeding tended to increase further when the daily ration  
386 of feed was divided into several small meals, and in addition the risk caused by having more than two  
387 meals tended to increase in liquid fed pigs. This is probably the result of the relationship between these  
388 two factors under practical farm conditions: liquid feeding is automated whereas dry feeding is mostly  
389 organized without any or only some automation (keeping in mind that the majority of farms had feed  
390 troughs, not one- or multi-space feeders). The number of working hours required by the farmer to feed  
391 by-hand is likely to limit the number of meals offered. Ninety percent of finisher farms using liquid  
392 feeding had more than two meals a day, whereas 75 percent of farms feeding the pigs with dry feeds

393 had meals only once or twice a day or feed present at all times, which explains the additive effect of the  
394 risk factors observed within our data.

395 The risk connected to use of liquid feeding at the finisher stage (25 – 110 kg) was even more pronounced  
396 in farms having pigs from birth to slaughter, and when having only finisher pigs the risk was not  
397 significantly connected to TBD at all, than ... One reason for this interaction could be that piglets  
398 experience a change from dry feeding to liquid feeding at the time of the transition into the finisher unit.  
399 This was tested statistically, but there was no effect of the change in feed type on TBD (data not shown  
400 as non-significant). However, it is possible that the interaction and its effect on TBD was more affected  
401 by the size of the farm, total number of pigs, pigs per stockperson or number of units at farm than by  
402 type of production itself, as liquid feeding is more common in large farms. These were all recognized  
403 as risk factors for tail biting by Moinard *et al* (2003).

#### 404 *Management related risk factors*

405 The total number of pigs per farm was connected to the risk for TBD. Increasing farm size by 100  
406 finisher pigs was associated with a 0.4 % increase in odds of TBD. This means that farm size, even  
407 though being a significant risk factor for tail biting, has a relatively small practical influence. This is in  
408 accordance with Moinard *et al* (2003) who found a 1.01 fold increase in the risk for tail biting as the  
409 number of pigs slaughtered weekly increased by one. Increased number of pigs and pens per stockman  
410 is another risk factor for tail biting connected with larger farms (Moinard *et al* 2003).

411 Farms raising only finishers were associated with greater risk of TBD in the finisher unit compared to  
412 farms raising piglets from birth to slaughter. The reason for the higher risk in farms raising only finishers  
413 for TBD might be changing environment, feeding, human contact and social grouping when pigs are  
414 delivered from one farm to another according to their age – even three times in a lifespan. The pigs  
415 originating from the same farm (from birth to slaughter-production) might not experience stress  
416 associated with these changes. Pigs seem to be more vulnerable to tail biting behaviour if moved to  
417 another farm during the weaning-finishing period, as indicated by a greater proportion of truck  
418 transportation in case systems (Moinard *et al* 2003). The interaction between type of production and



419 use of liquid feeding or number of meals, as described earlier, might demonstrate the overall effect of  
420 stable environmental and feeding related solutions to work against general stress factors as potential  
421 triggers for tail biting behaviour.

422 The interaction effect found of further elevated risk for TBD caused by larger group size among from-  
423 birth-to-slaughter-farms and by having only finisher pigs with smaller group size, is difficult to explain.  
424 It was shown that farms having units for all ages of pigs most commonly had smaller group sizes (less  
425 than 10 pigs) in the finisher pens, whereas farms having only finisher pigs had moderate to large group  
426 sizes (ten pigs or more) in the finisher pens. There might have been a third unknown factor causing this  
427 effect such as diverse technical, environmental or feeding related management solution in farms having  
428 one of the two production types. These kind of three dimensional interactions remained unsolved  
429 because there were too few farms for statistical analysis and therefore no regression models that  
430 covering all the relevant risk factors. Taylor *et al* (2012) observed that even farms with good  
431 management practices regarding prevention of tail biting might have deficiencies in other areas  
432 influencing the overall risk of what? on the farm.

### 433 ***Risk factors from the diet study***

434 In this study, purchased compound feeds (PCF) fed in the grower unit were associated with increased  
435 risk for TBD. Giving PCF to pigs at the grower stage might be due to the practicality, or an attempt to  
436 increase diet quality or digestibility, aiming at achieving the optimal daily growth potential. However,  
437 Berrocoso *et al* (2012) questioned the benefit of complexity of feeds in the starter phase. PCF are  
438 usually supplemented with pure amino acids and minerals as premix, which makes them more nutrient  
439 dense than farm made mixtures. Weaner pigs are suggested to suffer from endotoxin stress if fed high-  
440 energy dense diets, causing pigs to become more predisposed to become tail-bitten (Jäger 2013).  
441 Moreover, PCF are usually pelleted, a form of feed that has been connected to increasing risk for tail  
442 biting in long-tailed pigs (Hunter *et al* 2001), although not in this study.

443 Use of wheat and use of PFC were interconnected because wheat was included in almost all PCF for its  
444 higher energy value and digestibility in young animal compared to barley and oat, which are the most

445 common grains used in farm made feed mixtures. Use of wheat for grower pigs was found to be a risk  
446 factor for TBD although, whereas all case farms had it included in the diet, this was also true for two  
447 thirds of the control farms. It is concluded that finding use of wheat as risk factor is a confounding effect  
448 of usage of PFC, not necessarily a true risk associated with provision of the separate ingredient by itself.

449 There are some findings in the literature of an association between liquid whey in feeds and tail biting  
450 (Holmgren & Lundeheim 2004). In our study whey was reported to be used only as dry condensed  
451 powder, mostly as an ingredient of PCF or protein concentrate. It was not used with liquid feeding, so  
452 there was no interaction between liquid feeding and whey in determining the risk of TBD. Dry whey  
453 increased the risk for TBD in dry feeding systems among grower pigs. Although whey is shown to have  
454 beneficial effects on growth after weaning (de Lange *et al* 2006), possibly due to its high lactose content  
455 helping the shift from maternal milk to external feed source (Berrocoso *et al* 2012), whey could be a  
456 risk factor for tail biting because it has been reported to have varying sodium and potassium content  
457 and might induce salt poisoning if water supply is limited (de Lange *et al* 2006). A variable level of  
458 NaCl in the diet is suggested to be associated with tail biting behavior (Fraser 1987), and salt poisoning  
459 is more common in farms having tail biting (Moinard *et al* 2003). An interaction between PCF and  
460 whey seems likely, but remains unknown because we had too few observations for further analyses.

#### 461 **Conclusions and animal welfare implications**

462 EU Commission Directive (EC 2001/93, article 8 of the annex) states: “*Neither tail docking ..... must*  
463 *be carried out routinely but only where there is evidence that injuries to ..... other pigs’ ears or tails*  
464 *have occurred. Before carrying out these procedures, other measures shall be taken to prevent tail*  
465 *biting and other vices taking into account environment and stocking densities. For this reason,*  
466 *inadequate environmental conditions or management systems must be changed.*” In order to practice  
467 pig production in Europe within EU legislation as intended, farmers are obliged to first adjust the  
468 environment for the benefits of the pigs and, only if this is impossible and there is evidence of tail biting  
469 wounds, is there the possibility to tail-dock the pigs. In the light of our results the risk factors seem to  
470 be mainly identical among short and long-tailed pigs. The nutritional risk factors operate through

471 interactions with environmental and management based risk factors, but with relatively lower odds.  
472 This study gives the farmers tools to manage the potentially higher risk for tail biting among the long-  
473 tailed pigs in order to better conform to EU legislation. Minimizing these risk factors might improve  
474 the welfare of pigs by allowing them to fulfil their behavioural and nutritional needs that otherwise  
475 might lead to unwanted behaviour like tail biting.

#### 476 **Acknowledgements**

477 The authors wish to thank all farmers that dedicated their time to fulfil the questionnaires. We wish to  
478 thank ETT ry (The Association for Animal Disease Prevention ETT ra, Finland) for allowing us to  
479 select the farms suitable for this study. Karianne Muri is appreciated for her expertise of methodological  
480 and statistical knowledge. This trial was a part of the NKJ (Nordic Joint Committee for agricultural and  
481 food research)-funded project 'Tail biting and tail docking in the pig: biological mechanisms,  
482 prevention, treatment and economic aspects' and national funding received from Finnish Ministry of  
483 Agriculture and Forestry. P Palander was personally supported by grants from Oiva Kuusisto Säätiö  
484 and Aniwel (Doctoral training program), and the European Regional Development Fund (EAKR)  
485 Project A31342.

486 **References**

- 487 **Averos X, Brossard L, Dourmad J-Y, Greef KH de, Edge HL, Edwards SA and Meunier-Salaün**  
488 **M-C** 2010 A meta-analysis of the combined effect of housing and environmental enrichment  
489 characteristics on the behavior and performance of pigs. *Applied animal behavior science* 127: 73 –  
490 85.
- 491 **Beattie VE, Breuer K, O'Connell NE, Sneddon IA, Mercer JT, Rance KA, Sutcliffe MEM and**  
492 **Edwards SA** 2005 Factors identifying pigs predisposed to tail biting. *Animal Science* 80: 307 – 312.
- 493 **Beattie VE, Walker N and Sneddon IA** 1996 An investigation of the effect of environmental  
494 enrichment and space allowance on the behavior and production of growing pigs. *Applied animal*  
495 *behavior science* 48: 151 – 158.
- 496 **Beattie VE, Walker N and Sneddon IA** 1995 Effects of environmental enrichment on behaviour and  
497 productivity of growing pigs. *Animal welfare* 4: 207 – 220.
- 498 **Berrocoso JD, Serrano MP, Cámara L, Rebollar PG and Mateos GG** 2012 Influence of diet  
499 complexity on productive performance and nutrient digestibility of weanling pigs. *Animal feed*  
500 *science and technology* 171: 214 – 222.
- 501 **Bolhuis JE, Brand H van den, Bartels AC, Oostindjer M, Borne JJGC van den, Kemp B and**  
502 **Gerrits WJJ** 2010 Effects of fermentable starch on behavior of growing pigs in barren or enriched  
503 housing. *Applied animal behavior science* 123: 77 – 86.
- 504 **Botermans AM and Svendsen J** 2000 Effect of feeding environment on performance, injuries and  
505 behaviour in growing-finishing pigs: Group-based studies. *Acta agriculturae scandinavica, section A –*  
506 *Animal science* 54 (4): 237 – 249.
- 507 **Bracke MBM, Hulsegge B, Keeling L and Blokhuis HJ** 2004 Decision support system with  
508 semantic model to assess the risk of tail biting in pigs 1. Modelling. *Applied animal behaviour science*  
509 87: 31 – 44.

510 **Day JEL, Burfoot A, Docking CM, Whittaker X, Spooler HAM and Edwards SA** 2002 The  
511 effects of prior experience of straw and the level of straw provision on the behaviour of growing pigs.  
512 *Applied animal behaviour science* 76: 189 – 202.

513 **D'Eath RB, Arnott G, Turner SP, Jensen T, Lahrmann HP, Busch ME, Niemi JK, Lawrence**  
514 **AB and Sandøe P** 2014 Injurious tail biting in pigs: how can it be controlled in existing systems  
515 without tail docking? *Animal* 8:9, 1479 – 1497.

516 **Dupont WD and Plummer WD** 1990 'Power and Sample Size Calculations: A Review and  
517 Computer Program', *Controlled Clinical Trials* 11: 116-28. Version 3.0.0043. Available through  
518 internet for free: [biostat.mc.vanderbilt.edu](http://biostat.mc.vanderbilt.edu).

519 **EFSA** 2007 Scientific report on the risks associated with tail biting in pigs and possible means to  
520 reduce the need for tail docking. *The EFSA journal* 611: 1 – 98.

521 **European commission** 2013 Commission to issue guidelines on the welfare of pigs. *Animal health*  
522 *and welfare* (25-03-2013). Directorate general for health and consumers. Internet:  
523 [http://ec.europa.eu/dgs/health\\_consumer/dyna/enews/enews.cfm?al\\_id=1358](http://ec.europa.eu/dgs/health_consumer/dyna/enews/enews.cfm?al_id=1358). Taken 23.5.2013.

524 **Fraser D** 1987 Mineral-deficient diets and the pigs attraction to blood: implications for tail biting.  
525 *Canadian Journal of Animal Science* 67: 909 – 18.

526 **Fraser D, Bernon DE and Ball RO** 1991 Enhanced attraction to blood by pigs with inadequate  
527 dietary-protein supplementation. *Canadian journal of animal science* 71 (3): 611 – 619.

528 **Hessel EF, Wulbers-Mindermann M, Berg C, Van den Weghe HFA and Algers B** 2006 Influence  
529 of increased feeding frequency on behavior and integument lesions in growing-finishing restricted-fed  
530 pigs. *Journal of animal science* 84: 1526 – 1534.

531 **Holmgren N and Lundeheim N** 2004 Risk factors for tail biting. *Proceedings of the 18th IPVS*  
532 *Congress, 27/06 – 1/07/2004, Hamburg, Germany.* p. 786.

533 **Hunter EJ, Jones TA, Guise HJ, Penny RHC and Hoste S** 2001 The relationship between tail  
534 biting in pigs, docking procedure and other management practices. The veterinary journal 161: 72 –  
535 79.

536 **Jericho KWF and Church TL** 1972 Cannibalism in pigs. Canadian veterinary journal 13: 156 – 159.

537 **Jäger F** 2013 Das project “intakter ringelschwanz” beim Schwein – stehen wir vor dem Durchbruch?  
538 Tieraerzliche Umschau 68: 3 – 11.

539 **Kowalczyk T** 1969 Etiological factors of gastric ulcers in swine. American journal of veterinary  
540 research 30: 393 – 400.

541 **Lange de CFM, Zhu CHZ, Niven S, Columbus D and Woods D** 2006 Swine liquid feeding:  
542 nutritional considerations. In: 27<sup>th</sup> Western nutrition conference, 19 – 20 September, Winnipeg,  
543 Manitoba, Canada. Unpaginated. Animal Nutrition Association of Canada.

544 **Madsen A** 1980 Environmental influence on health of bacon pigs. In: Nielsen NC, Høgh P and Bille  
545 N (eds) Proceedings of the IPVS 1980 congress, June 30 – July 3, Copenhagen, Denmark pp 320.  
546 International pig veterinary society.

547 **McIntyre J and Edwards S** 2002 An investigation into the effect of different protein and energy  
548 intakes on model tail chewing behaviour of growing pigs. Applied animal behaviour science 77: 93 –  
549 104.

550 **Moinard C, Mendl M, Nicol CJ and Green LE** 2003 A case control study of on-farm risk factors  
551 for tail biting in pigs. Applied animal behavior science 81: 333 – 355.

552 **Munsterhjelm C, Peltoniemi OAT, Heinonen M, Hälli O, Karhapää M and Valros A** 2009  
553 Experience of moderate bedding affects behaviour of growing pigs. Applied animal behaviour science  
554 118: 42 – 53.

555 **Munsterhjelm C, Simola O, Keeling L, Valros A and Heinonen M** 2013 Health parameters in tail  
556 biters and bitten pigs in a case-control study. Animal 7 (5): 814 – 821.

557 **Niemi JK, Sinisalo A, Valros A and Heinonen M** 2011 The timing and treatment of tail biting in  
558 fattening pigs. In: J Hulgren, P Persson, E Nadeau and F Fogelberg (eds) 24<sup>th</sup> NJF Congress “Food,  
559 feed, fuel and fun – Nordic light on future land use and rural development”, NJF Report 7 pp 50 – 55.  
560 NJF, Uppsala, Sweden.

561 **Pedersen AO, Canibe N, Hansen ID and Aaslyng MD** 2002 Fermented liquid feed for finishers –  
562 Pelleted feed, vol 1. The national committee for pig production, Copenhagen.

563 **Ruiterkamp WA** 1985 The behavior of fattening pigs in relation to housing, in Dutch (Het gedrag  
564 van mestvarkens in relatie tot huisvesting), Ph.D. Thesis, University of Utrecht, The Netherlands.

565 **Schrøder-Petersen DL and Simonsen HB** 2001 Tail biting in pigs. *Veterinary Journal* 162, 196 –  
566 210.

567 **Schmolke SA, Li YZ and Gonyou HW** 2003 Effect of group size on performance of growing-  
568 finishing pigs. *Journal of animal science* 81: 874 – 878.

569 **Scholten RHJ, Peet-Schwering van der CMC, Verstegen MWA, Hartog den LA, Schrama JW**  
570 **and Vesseur PC** 1999 Fermented co-products and fermented compound diets for pigs: a review.  
571 *Animal feed science and technology* 82: 1 – 19.

572 **Sihvo H-K, Simola O, Munsterhjelm C and Syrjä P** 2012 Systemic spread of infection in Tail-  
573 bitten pigs. *Journal of comparative pathology* 146 (1): 73.

574 **Smulders D, Hautekiet V, Verbeke G and Geers R** 2008 Tail and ear biting lesions in pigs: an  
575 epidemiological study. *Animal welfare* 17: 61 – 69.

576 **Sutherland MA and Tucker CB** 2011 The long and short of it: A review of tail docking in farm  
577 animals. *Applied animal behaviour science* 135: 179 – 191.

578 **Taylor NR, Main DCJ, Mendl M and Edwards SA** 2010 Tail-biting: A new perspective. *The*  
579 *veterinary journal* 186: 137 – 147.

580 **Taylor NR, Parker RMA, Mendl M, Edwards SA and Main DCJ** 2012 Prevalence of risk factors  
581 for tail biting on commercial farms and intervention strategies. *The veterinary journal* 194: 77 – 83.

582 **Temple D, Courboulay V, Velarde A, Dalmau A and Manteca X** 2012 The welfare of growing  
583 pigs in five different production systems in France and Spain: assessment of health. *Animal welfare*  
584 21: 257 – 271.

585 **Zonderland JJ, Schepers F, Bracke MBM, Hartog den LA, Kemp B and Spoolder HAM** 2011  
586 Characteristics of biter and victim piglets apparent before a tail-biting outbreak. *Animal* 5 (5): 767 –  
587 775.



**Table I** General descriptors about the whole farm and of separate units of those farms, based on questionnaire answers by the farmers.

	Units			
	farm	piglet	grower	finisher
No. of farms	78	46	39	61
No. of adult animals at farm, mean $\pm$ SD	469 $\pm$ 650	272 $\pm$ 490	323 $\pm$ 569	575 $\pm$ 698
No. of sows at farm, mean $\pm$ SD	63 $\pm$ 205	107 $\pm$ 265	98 $\pm$ 282	64 $\pm$ 230
No. of finishers at farm, mean $\pm$ SD	398 $\pm$ 582	152 $\pm$ 238	212 $\pm$ 326	502 $\pm$ 620
<i>Breed of the pigs, %<sup>1</sup></i>				
Landrace	26,9	28,3	26,1	29,5
2-crossbred	50,0	56,5	56,5	47,5
3-crossbred	46,2	37,0	23,9	47,5
Other	3,8	4,3	4,3	3,3
<i>Analysis of feeds or raw materials available, %<sup>2</sup></i>				
Yes	74,4	72,1	56,5	77,0
No	19,2	27,9	21,7	14,8
<i>How often are feeds or raw materials analysed, %</i>				
From every new material fed	11,5	2,2	6,5	13,1
Yearly from every harvest	61,5	65,2	50,0	60,7
More seldom than mentioned above	3,8	4,3	4,3	4,9
Either no analysis or usage of full concentrates	23,1	28,3	39,1	21,3
<i>Who makes the feeding recipes, %<sup>2</sup></i>				
Farmer	29,5	41,3	28,3	24,6
Feeding company	37,2	34,8	28,3	37,7
Farmer and feeding company together	28,2	23,9	26,1	32,8
Advisor	3,8	0,0	2,2	3,3
Someone else	1,3	0,0	0,0	1,6
<i>Production type, %</i>				
From birth to slaughter	46,2	69,6	56,5	55,7
Specialized single type of production	53,8	30,4	28,3	44,3
<i>Is feeding automatized, %<sup>2</sup></i>				
Complately	38,5	10,9	8,7	47,5
Partly	30,8	47,8	41,3	27,9
Not at all	26,9	34,8	34,8	23,0
<i>What kinf of tail biting is there at farm, %<sup>2</sup></i>				
Continuous	1,3	2,2	0,0	1,6
From time to time	61,5	41,3	39,1	73,8
No tail biting at any time	33,3	50,0	45,7	23,0
<i>What proportion of pens have tail biting incidents, %<sup>3</sup></i>				
Less than half of the pens	100,0	100,0	100,0	100,0
More than half of the pens	0,0	0,0	0,0	0,0
<i>How many pigs have being bitten in the pens, %<sup>3</sup></i>				
A few pigs	91,8	95,0	94,4	91,1
Half of the pigs	4,1	0,0	0,0	4,4
Almost all pigs	4,1	5,0	5,6	4,4

<sup>1</sup> Farm can have more than one breed of pigs  
<sup>2</sup> The missing proportion are farms with no data available  
<sup>3</sup> Includes only those farms which have tail biting

**Table II** Distribution of farms and statistical significance within risk factors found to have association with tail biting damage (TBD) status in the feeding study.

Factors	Categories	No. Cases	%	No. Controls	%	Statistical significance		
<b>Piglet unit (0-10kg)</b>		total no. of farms	n=15	n=31		$\chi^2 / G / F$	df	Sig.
Slatted pen floor (fully or partly)	No	3	20,0	24	58,7	13,7	1	***
	Yes	12	80,0	7	22,6			
Area of slatted floor	0 %	3	20,0	24	77,4	14,4	2	**
	1 - 49 %	8	53,3	4	12,9			
	50 - 100 %	4	26,7	3	9,7			
Number of finisher pigs at farm <sup>1</sup>	mean±SD	282	203	89	230	7,662	1;44	**
<b>Weaner unit (11-30kg)</b>		total no. of farms	n=14	n=25				
Slatted pen floor (fully or partly)	No	1	7,1	13	52,0	7,8	1	**
	Yes	13	92,9	12	48,0			
Area of slatted floor	0 %	1	7,1	13	52,0	11,2	2	**
	1 - 49 %	9	64,3	11	44,0			
	50 - 100 %	4	28,6	1	4,0			
Number of finisher pigs at farm <sup>1</sup>	mean±SD	350	302	135	319	4,220	1;37	*
<b>Finisher unit (31-110kg)</b>		total no. of farms	n=36	n=25				
Slatted pen floor (fully or partly)	No	5	13,9	14	56,0	12,2	1	***
	Yes	31	86,1	11	44,0			
Area of slatted floor	0 %	5	13,9	14	56,0	12,5	2	**
	1 - 49 %	26	72,2	10	40,0			
	50 - 100 %	5	13,9	1	4,0			
Pigs in one pen	less than 10	14	38,9	17	68,0	5,0	1	*
	ten or more	22	61,1	8	32,0			
Liquid feeding	No	14	38,9	18	72,0	6,5	1	*
	Yes	22	61,1	7	28,0			
Meals offered / day	1 to 2 or to appetite	11	30,6	16	64,0	6,7	1	*
	>2 but not to appetite	25	69,4	9	36,0			
Presence of bedding	Yes	18	50,0	23	92,0	11,8	1	*
	No	18	50,0	2	8,0			
Number of finisher pigs at the farm <sup>1</sup>	mean±SD	729	692	174	268	14,495	1;59	***
Type of production	from birth to slaughter	16	44,4	18	72,0	4,5	1	*
	only finishers	20	55,6	7	28,0			

Sig. \*\*\*  $P < 0.001$ ; \*\*  $P < 0.01$ ; \*  $P < 0.05$

**Table III** Univariate logistic regression, magnitude of the risk expressed as odds ratios (OR) and model statistics of the risk factors found for tail biting damage (TBD) status from the feeding study.

Factors	Categories	Ref.	Unadjusted	CI (95%)	Hit ratio %	Cox & Snell R <sup>2</sup>	Model Sig.
			(crude) OR				
<b>Piglet unit (0-10kg)</b>							
Slatted pen floor (fully or partly)	No	†	1,0				
	Yes		13,7	3,0 - 62,7	78,3	26,6	0,001
Area of slatted floor	0 %	†	1,0		78,3	26,9	
	1 - 49 %		16,0	2,9 - 87,4			0,001
	50 - 100 %		10,7	1,6 - 72,7			0,016
Number of finisher pigs at farm <sup>1</sup>	mean±SD		1,005	1,001 - 1,009	80,0	16,5	0,025
<b>Weaner unit (11-30kg)</b>							
Slatted pen floor (fully or partly)	No	†	1,0				
	Yes		14,1	1,6 - 124,6	66,7	20,8	0,017
Area of slatted floor	0 %	†	1,0		71,8	24,9	
	1 - 49 %		10,6	1,2 - 97,6			0,037
	50 - 100 %		52,0	2,6 - 1033,8			0,010
Number of finisher pigs at farm <sup>1</sup>	mean±SD		1,002	1,000 - 1,005	64,1	9,6	0,077
<b>Finisher unit (31-110kg)</b>							
Slatted pen floor (fully or partly)	No	†	1,0				
	Yes		7,9	2,3 - 27,0	73,8	18,3	0,001
Area of slatted floor	0 %	†	1,0		73,8	18,8	
	1 - 49 %		7,3	2,1 - 25,5			0,002
	50 - 100 %		14,0	1,3 - 150,9			0,030
Pigs in one pen	less than 10	†	1,0				
	10 or more		3,3	1,1 - 9,8	63,9	8,0	0,028
Liquid feeding	No		1,0				
	Yes		4,0	1,3 - 12,1	65,6	10,3	0,013
Meals offered / day	1 to 2 or to appetite	†	1,0				
	>2 but not to appetite		4,0	1,4 - 11,9	67,2	10,5	0,011
Use of bedding	Presence	†	1,0				
	Absence		11,5	2,4 - 56,2	67,2	19,6	0,003
Number of finisher pigs at the farm <sup>1</sup>	mean±SD		1,004	1,002 - 1,007	78,7	30,4	0,002
Type of production	from birth to slaughter	†	1,0				
	only finishers		3,2	1,1 - 9,6	62,3	7,3	0,036
Ref. reference category							
Sig. *** $P < 0.001$ ; ** $P < 0.01$ ; * $P < 0.05$							

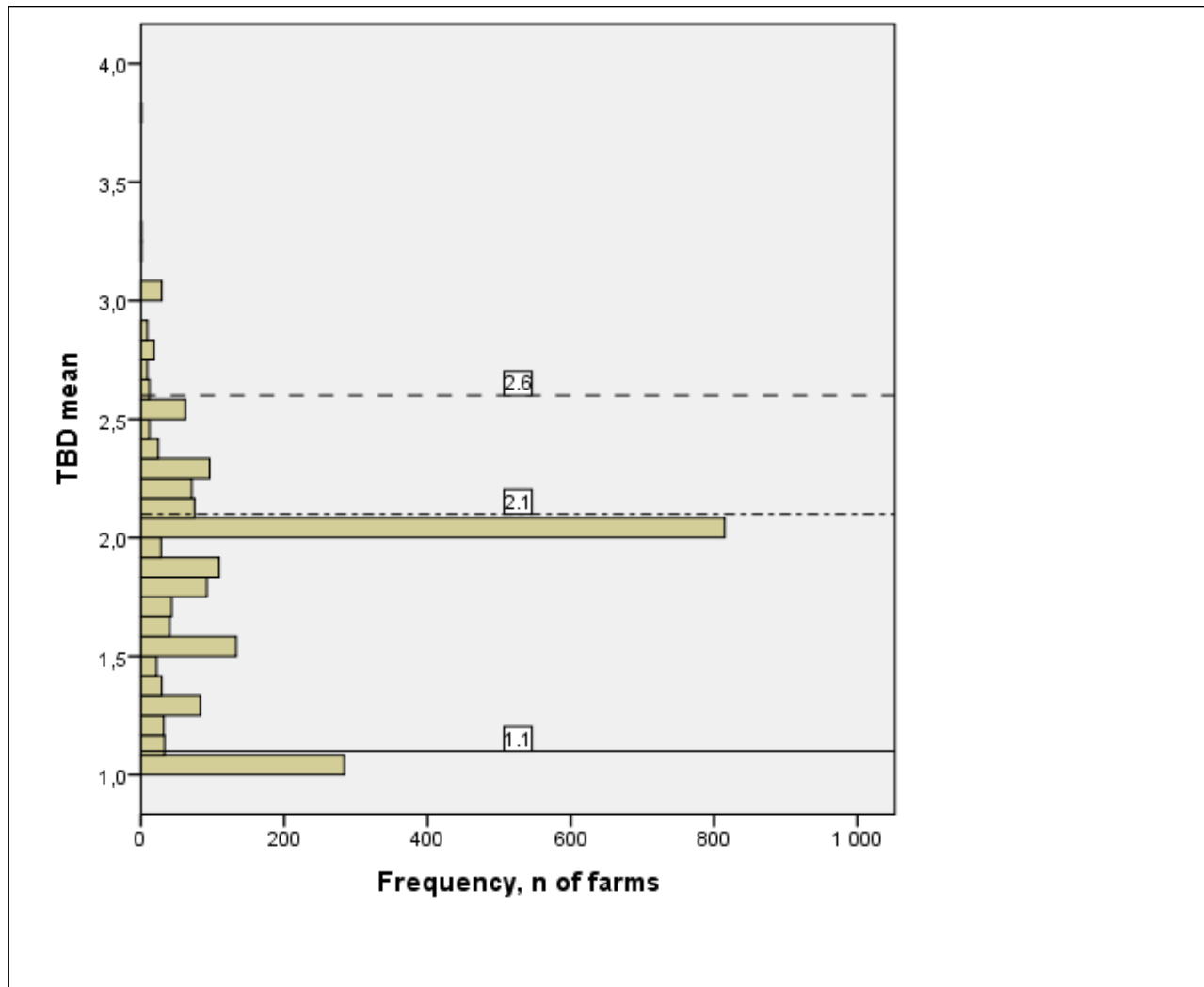
**Table IV** Distribution of farms and statistical significance within risk factors found to have association with tail biting damage (TBD) status in the diet study.

Factors	Categories	No. Cases	%	No. Controls	%	Statistical significance <sup>1</sup>	
<b>Piglet unit (0-10kg) <sup>2</sup></b>	total no. of farms	n=9		n=15		$\chi^2 / G / F$	df Sig.
<b>Weaner unit (11-30kg)</b>	total no. of farms	n=10		n=19			ns
Use of purchased compound feed	No	2	20,0	12	63,2	4,9	1 *
	Yes	8	80,0	7	36,8		
Use of wet or concentrated whey <sup>1</sup>	No	3	37,5	10	83,3	4,4	1 *
	Yes	5	63,5	2	16,7		
Use of wheat	No	0	0,0	6	31,6	3,980	1 *
	Yes	10	100,0	13	68,4		
<b>Finisher unit (31-110kg) <sup>2</sup></b>	total no. of farms	n=24		n=20			ns
*** P<0.001; ** P<0.01; * P<0.05; ns P>0.05							
im=impossible to measure							
<sup>1</sup> Farms that used unknown concentrated protein source were not included, n=9							
<sup>2</sup> No statistically significant risk factors were found							

**Table V** Univariate logistic regression, magnitude of the risk expressed as odds ratios (OR) and model statistics of the risk factors found for tail biting damage (TBD) status from the diet study.

Factors	Categories	Ref.	Unadjusted	CI (95%)	Hit ratio	Cox & Snell	Model
			crude OR		%	R <sup>2</sup>	Sig.
<b>Piglet unit (0-10kg)</b>							
<b>Weaner unit (11-30kg)</b>							
Use of purchased compound feed	No	†	1,0				
	Yes		6,9	1,1 - 41,8	69,0	16,3	*
Use of wet or concentrated whey 1	No	†	1,0				
	Yes		8,3	1,03 - 67,1	75,0	20,1	*
Use of wheat	No	†	1,0				
	Yes		im	im	im	im	im
<b>Finisher unit (31-110kg)</b>							
Ref. reference category							
Sig. *** $P < 0.001$ ; ** $P < 0.01$ ; * $P < 0.05$							
<sup>1</sup> Farms that used unknown concentrated protein source were not included, n=9							
im=impossible to measure							

**Figure 1** The frequency distribution of average annual tail biting damage level (TBD mean) of the farms. 1 = no TBD, 2 = some TBD (1-5% of the pigs) , 3 = plenty of TBD (6-19% of the pigs), 4 = lots of TBD (over 20% of the pigs). N = 2163 farms. Dashed lines point out the lower limit of TBD mean selected for case farms in year 1 ( - - - ) and year 2 ( - . - . - ). Solid line shows the upper limit of TBD mean accepted for control farms in both the years.



**Figure II**

IMPORTANT QUESTION! Do we need figures (bar charts) for interactions? There is possible to put interactions into bars using **number of observation** in each strata (=possible combination of answer choices) compared to non-stratified category. At this moment, these number of observations are not presented in the text, only the statistical values and significances are. But if the text is enough to describe the interactions and their odds ratios, I would rather not include any extra figures. Showing all interactions needs 8 figures. **What do you all think?**

(one example of presenting this is below, without any OR:s or significances at this point, because they are difficult to include)

