



## OPEN

# Omics-based interpretation of synergism in a soil-derived cellulose-degrading microbial community

SUBJECT AREAS:  
SOIL MICROBIOLOGY  
METAGENOMICS

Received  
5 March 2014

Accepted  
23 May 2014

Published  
13 June 2014

Correspondence and requests for materials should be addressed to R.F.Y. (yangruifu@genomics.cn); V.G.H.E. (vincent.eijsink@nmbu.no) or J.W. (wangji@genomics.cn)

\* These authors contributed equally to this work.

Yizhuang Zhou<sup>1,2\*</sup>, Phillip B. Pope<sup>3\*</sup>, Shaochun Li<sup>1,2</sup>, Bo Wen<sup>1,2</sup>, Fengji Tan<sup>1,2</sup>, Shu Cheng<sup>1,2</sup>, Jing Chen<sup>1,2</sup>, Jinlong Yang<sup>1,2</sup>, Feng Liu<sup>1,2</sup>, Xuejing Lei<sup>1,2</sup>, Qingqing Su<sup>1,2</sup>, Chengran Zhou<sup>1,2</sup>, Jiao Zhao<sup>1,2</sup>, Xiuzhu Dong<sup>4</sup>, Tao Jin<sup>2</sup>, Xin Zhou<sup>2</sup>, Shuang Yang<sup>1,2</sup>, Gengyun Zhang<sup>2</sup>, Huangming Yang<sup>1,2</sup>, Jian Wang<sup>1,2</sup>, Ruifu Yang<sup>1,2,5</sup>, Vincent G. H. Eijsink<sup>3</sup> & Jun Wang<sup>2,6,7,8</sup>

<sup>1</sup>Shenzhen Key laboratory of Bioenergy, BGI-Shenzhen, Shenzhen 518083, CHINA, <sup>2</sup>BGI-Shenzhen, Shenzhen 518083, CHINA, <sup>3</sup>Department of Chemistry, Biotechnology and Food Science, Norwegian University of Life Sciences, Ås, 1432 NORWAY, <sup>4</sup>State Key Laboratory of Microbial Resources, The Institute of Microbiology, Chinese Academy of Sciences, Beijing 100101, CHINA, <sup>5</sup>State Key Laboratory of Pathogen and Biosecurity, Beijing Institute of Microbiology and Epidemiology, Beijing 100071, CHINA, <sup>6</sup>Department of Biology, University of Copenhagen, Copenhagen, DENMARK, <sup>7</sup>King Abdulaziz University, Jeddah, SAUDI ARABIA, <sup>8</sup>Macau University of Science and Technology, Macau, CHINA.

**Reaching a comprehensive understanding of how nature solves the problem of degrading recalcitrant biomass may eventually allow development of more efficient biorefining processes. Here we interpret genomic and proteomic information generated from a cellulolytic microbial consortium (termed FIRT) enriched from soil. Analyses of reconstructed bacterial draft genomes from all seven uncultured phylotypes in FIRT indicate that its constituent microbes cooperate in both cellulose-degrading and other important metabolic processes. Support for cellulolytic inter-species cooperation came from the discovery of FIRT microbes that encode and express complimentary enzymatic inventories that include both extracellular cellulosomes and secreted free-enzyme systems. Metabolic reconstruction of the seven FIRT phylotypes predicted a wider genomic rationale as to how this particular community functions as well as possible reasons as to why biomass conversion in nature relies on a structured and cooperative microbial community.**

Utilization of traditional fossil fuels is commonly associated with global environmental issues and supply concerns, emphasizing the need for sustainable biofuel alternatives. Cellulose, the Earth's most abundant renewable biomass substrate<sup>1</sup> is gaining increased attention<sup>2,3</sup>, however its industrial-scale conversion to biofuel is impeded by structural recalcitrance and a paucity of available biocatalysts. Current research on enzyme systems for cellulose conversion focuses on the abilities of free-enzyme systems<sup>4</sup> and/or cellulosomes<sup>5–7</sup> within individual microorganisms. However, it is likely that cellulose turnover in nature benefits from the concerted actions within a microbial consortium or “microbiome”<sup>8–10</sup>. This has been previously illustrated in the laboratory for a defined mixed culture constructed from five isolated strains (designated SF356), which collectively degraded cellulose whilst maintaining stable population structure and improved function over time<sup>11,12</sup>.

As cellulose-rich plant biomass is constantly recycled in soil environments, a plethora of efficient cellulose-degrading machineries should perceivably exist in its resident microbiomes, potentially including hitherto concealed degradation mechanisms. Recently, metagenomic sequencing has enabled in-depth description of complex microbiomes specialized in plant biomass conversion including digestive<sup>8,10</sup> and free-living ecosystems<sup>9</sup>. What is more, the currently attainable depth of such sequencing efforts combined with the progression of taxonomic “binning” software has facilitated the reconstruction of genomes representative of the as-yet uncultured microbes that reside within a microbiome<sup>8,13</sup>. Based on these notions, we have utilized a compilation of culture-independent “omics” techniques to analyze the genomic potential and functional synergies within a proficient low-complexity cellulose-degrading microbial consortium enriched from a naturally occurring soil sample.

## Results

**The discovery and structural depiction of the FIRT consortium.** Five humified soil samples were collected from different locations in Shaoguan, China and their cellulolytic abilities were analyzed using degradation of



filter paper as an indication (Supplementary Fig. 1). To circumvent the high levels of species complexity inherent to soil microbiomes, an enrichment strategy was applied to the best performing samples using serial-dilution, plating and repetitive subculturing on selective aerobically prepared media. Despite these extensive efforts, pure cultures were not obtained. Rather, we ended up with a consortium (hereafter termed FIRT) that initially appeared as one colony on a selective plate (Supplementary Fig. 2). FIRT was functionally stable during dozens of subsequent passages and was capable of completely degrading filter paper (Supplementary Fig. 3). 16S rRNA gene sequencing analysis revealed that it was a mixed consortium containing seven individual phylotypes that were affiliated at varying identity values (92.4–99.8 ID%) to both aerobic and anaerobic species (*rrs* clusters: RC1–7, Table 1). Given the phylogenetic and putative phenotypic variation in FIRT a metagenomic and genome binning approach was employed to recover near-complete genomes so that a holistic interpretation could be made on the metabolic capabilities for all seven phylotypes. Using Illumina technology we recovered 12.8 Gb of FIRT metagenomic reads, with rarefaction curves (Supplementary Fig. 4) suggesting that the sequencing depth was sufficient for *de novo* assembly. Approximately 90.1% of high-quality reads (10.23 Gb) were assembled into a total of 3,930 scaffolds (length  $\geq$ 500 bp, average length 6.7 kb), totalling 26.51 Mb (Supplementary Fig. 5). Using GeneMark 27,532 open reading frames (ORFs) with length  $\geq$ 100 bp were predicted.

To enable genomic analysis of FIRT phylotypes a combinatory binning approach based on read-coverage of conserved single-copy genes<sup>14</sup>, Markov model-based tetranucleotide frequencies<sup>15</sup> and a naïve Bayesian classifier<sup>16</sup> was used to reconstruct seven uncultured microbial genomes from the assembled metagenome scaffolds (FC1–7; Table 1, Supplementary Note 1, Supplementary Table 3). We applied the same workflow as described previously<sup>8</sup> to assess the coverage of binned genomes when compared to complete genomes available in GenBank (Supplementary Note 2). Completeness estimations of the binned genomes indicated that all seven were near-complete draft genomes with low redundancy of conserved single-copy genes (i.e. high “authenticity”), although for FC7 the data indicated slightly lower levels of completeness and authenticity (Supplementary Fig. 9; Supplementary Table 4). Genome assembly coverage data indicated that FC1, FC2 and FC3 are the most abundant phylotypes in FIRT (Table 1, (Supplementary Fig. 7).

Draft genome bins FC1–7 were found to lack 16S rRNA genes, presumably due to the repetitive nature of 16S rRNA operons, which often leads to assembly issues in bacterial genomes. TETRA, ANI and AAI measurements<sup>17</sup> were used to identify the taxonomy of the FC genomes and failed to designate species affiliations, implying that all phylotypes in this community have not been sequenced to date (Table 1, Supplementary Table 8). Therefore we compared the dif-

ferent taxonomic affiliations collected for both the FC and the RC datasets to enable putative associations between the FIRT draft genome bins (FC) and operational taxonomic units (OTUs; RC) (Table 1, Supplementary Note 3). Both FC and RC comparisons identified that all seven clusters were affiliated to the Firmicutes phylum with five clusters affiliated to the order *Clostridiales* and two clusters affiliated to the *Bacillales* (Table 1). Additional phylogenetic analysis of *Clostridiales*-affiliated 16S rRNA sequences from RC phylotypes, the closest RC relatives and the closest FC relatives (determined by TETRA matches) demonstrated distinct phylogenetic clustering, which was used to identify “direct” RC-FC associations (Supplementary Note 3). FC2 exhibited closest genome similarity to *Clostridium thermocellum* (TETRA coefficient = 0.95) and was putatively affiliated with *Clostridium straminisolvens* (RC3: 16S rRNA identity 99.6%), an anaerobic cellulolytic soil bacterium. FC1 also exhibited closest genome similarity to *C. thermocellum* (TETRA coefficient = 0.92), but was putatively affiliated with *Clostridium thermosuccinogenes* (RC2: 16S rRNA identity 99.1%; Table 1) as well as *Clostridium* sp. FG4 (16S rRNA identity 99.3%). Interestingly, the latter species is an oligosaccharide fermenting anaerobe that was found to co-exist with *C. straminisolvens* in SF356 enrichments<sup>12</sup>. FC5 was putatively affiliated with *Clostridium sporogenes* (RC1). The low TETRA coefficients displayed by FC6 and incoherent clustering of FC7 prevented direct associations with RC clusters and their affiliate species. By the process of elimination FC6 and FC7 were “non-directly” associated to either one of the remaining *Clostridiales* RC clusters, which were affiliated to *Cellulosilyticum lentocellum* (RC5: 16S rRNA identity 92.4%) and *Tissierella praeacuta* (RC6: 16S rRNA identity 94.1%) (Table 1, Supplementary Note 3). Similarly, the two FIRT phylotypes that were putatively affiliated with the order *Bacillales* (FC3 and FC4) were non-directly associated with either one of the RC clusters that were affiliated to the aerobic *Brevibacillus borstelensis* of the same order (RC4 and RC7, Table 1). For non-direct associations the best available clustering was used to speculate on a predictive association (Table 1).

**Omics-based interpretation of FIRT’s cellulolytic capacity.** The cellulolytic capabilities exhibited by the FIRT consortium and the affiliations of some of its constituent phylotypes to cellulolytic clostridia (Table 1) directed our initial attention towards FIRT’s potential to encode and utilize cellulosome structures. Cellulosomes, first described in *C. thermocellum*<sup>5,7</sup>, are elaborate multi-enzyme machines that are assembled by protein-protein interactions between type I cohesin modules in a scaffoldin and type I dockerin modules attached to each enzyme-subunit. Interactions between type II cohesins and type II dockerins, encoded within particular scaffoldins and/or cell-surface proteins, may link cellulosomal structures to cell surfaces and/or to other cellulosomes (polycellulosomes)<sup>6</sup>. We

**Table 1 | General features of the FIRT consortium described as 16S rRNA OTUs (*rrs* clusters: RC) and draft genome bins (FIRT clusters: FC)**

RC	**Closest relative ( <i>rrs</i> ID)	% ID	assoc.*	FC	**Closest genome (TETRA coeff. †)	FC cov.	FC size
RC1	<i>Clostridium sporogenes</i> <sup>24</sup> : aa, ac, et	98.6	■	FC5	<i>Clostridium botulinum</i> (0.99)	56x	2.9 Mb
RC2	<i>Clostridium thermosuccinogenes</i> <sup>25</sup>	99.1		FC1	<i>Clostridium thermocellum</i> <sup>c,cel</sup> (0.92)	1015x	4.1 Mb
RC3	<i>Clostridium straminisolvens</i> <sup>22</sup> : aa,c,ac,et	99.6	■	FC2	<i>Clostridium thermocellum</i> <sup>c,cel</sup> (0.95)	635x	4.3 Mb
RC4	<i>Brevibacillus borstelensis</i> <sup>28</sup> : a,ch	99.8		FC3	<i>Brevibacillus brevis</i> (0.91)	322x	5.1 Mb
RC5	<i>Cellulosilyticum lentocellum</i> <sup>26</sup> : aa,c,cel,ac, et	92.4	■	FC7	<i>Clostridium</i> sp. <i>Maddingley</i> (0.93)	16x	2.4 Mb
RC6	<i>Tissierella praeacuta</i> <sup>27</sup> : aa	94.1		FC6	<i>Eubacterium limosum</i> (0.73)	30x	3.2 Mb
RC7	<i>Brevibacillus borstelensis</i> <sup>28</sup> : a,ch	96.8	■	FC4	<i>Bacillus</i> sp. SG-1 (0.88)	106x	4.5 Mb

†Values that infer affiliations between two species are defined as TETRA  $\geq$  0.99.

\*Phylogenetic analysis of both RC and FC closest relatives enabled putative associations between both datasets. Red denotes a putative direct RC-FC association inferred from phylogenetic clustering of *Clostridium* species (Supplementary Fig. 10). White (RC5, RC6 and FC6, FC7; *Clostridiales*) and blue (RC4, RC7 and FC3, FC4; *Bacillales*) boxes denote non-direct associations where clustering analysis did not enable specific RC-FC associations (e.g. FC3 could be associated to either RC4 or RC7, see Supplementary Note 3 for details). In these instances the best available clustering was used to speculate on a predictive association.

\*\*Organism names are labeled according to known metabolic properties that are supported by experimental observations taken from the literature; note that not every potential property has been analyzed for each of the organisms: a: aerobic, aa: anaerobic, ac: acetate producer, c: cellulolytic, cel: cellulosomal components detected, ch: casein hydrolysis, et: ethanol producer.

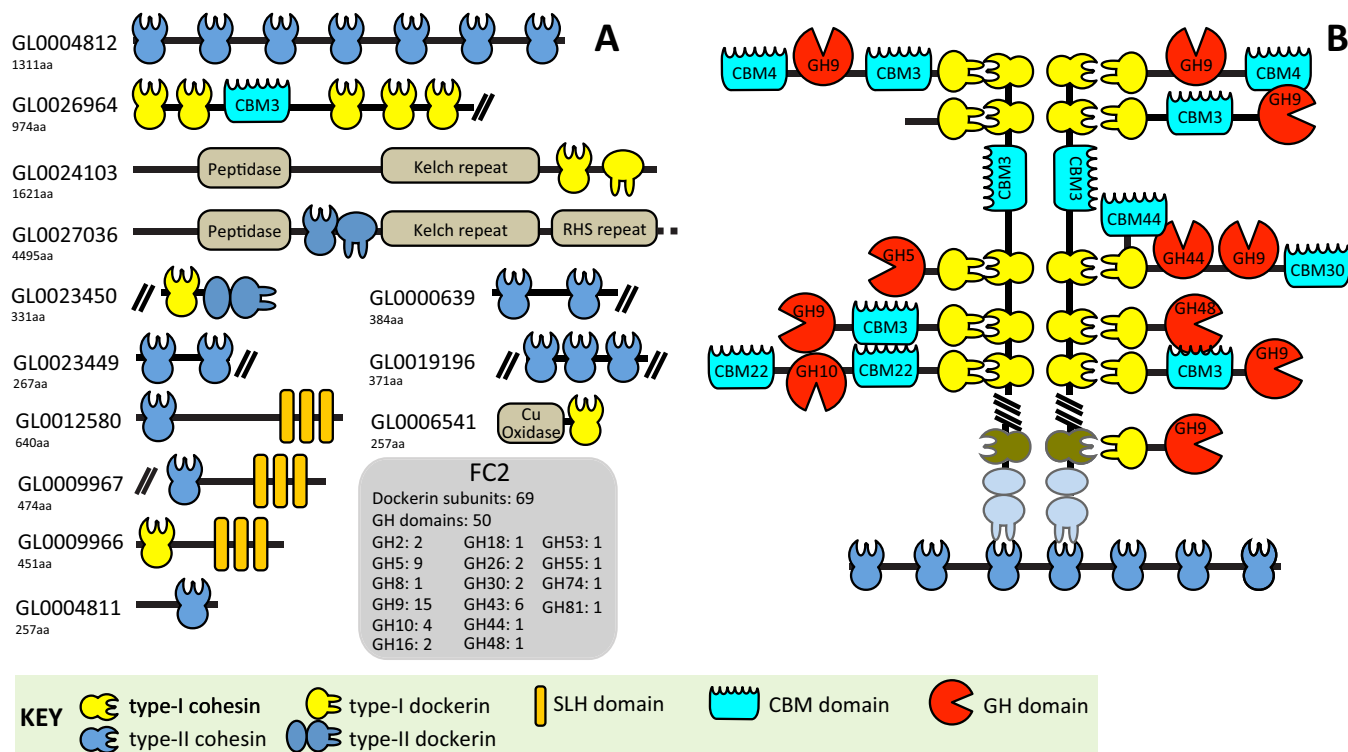


detected 74 putative dockerins that consisted of 69 type I and 5 type II domains (domain architecture: Supplementary Tables 9–11, domain alignment: Supplementary Fig. 11). A total of 27 putative cohesin domains arranged into 13 scaffoldin-encoding ORFs (domain architecture: Fig. 1A, Supplementary Table 12, domain alignment: Supplementary Fig. 12). All cellulosomal ORFs were affiliated to FC2, whose genome was most similar to the genome of the known cellulosomal bacteria *C. thermocellum*. Notably, the TETRA coefficients for genome comparisons were 0.95, i.e. well below the cut-off value (0.99<sup>17</sup>) that would indicate species affiliation (Table 1). Given the incomplete status of the FC2 genome, a detailed prediction of the structural assemblies of FIRT cellulosomes was not attempted. Regardless, the large modular variability observed in FC2 scaffoldins (Fig. 1A) and the identification of both type I and type II cohesin/dockerin modules, suggests a large number of diverse (poly)cellulosome assemblies.

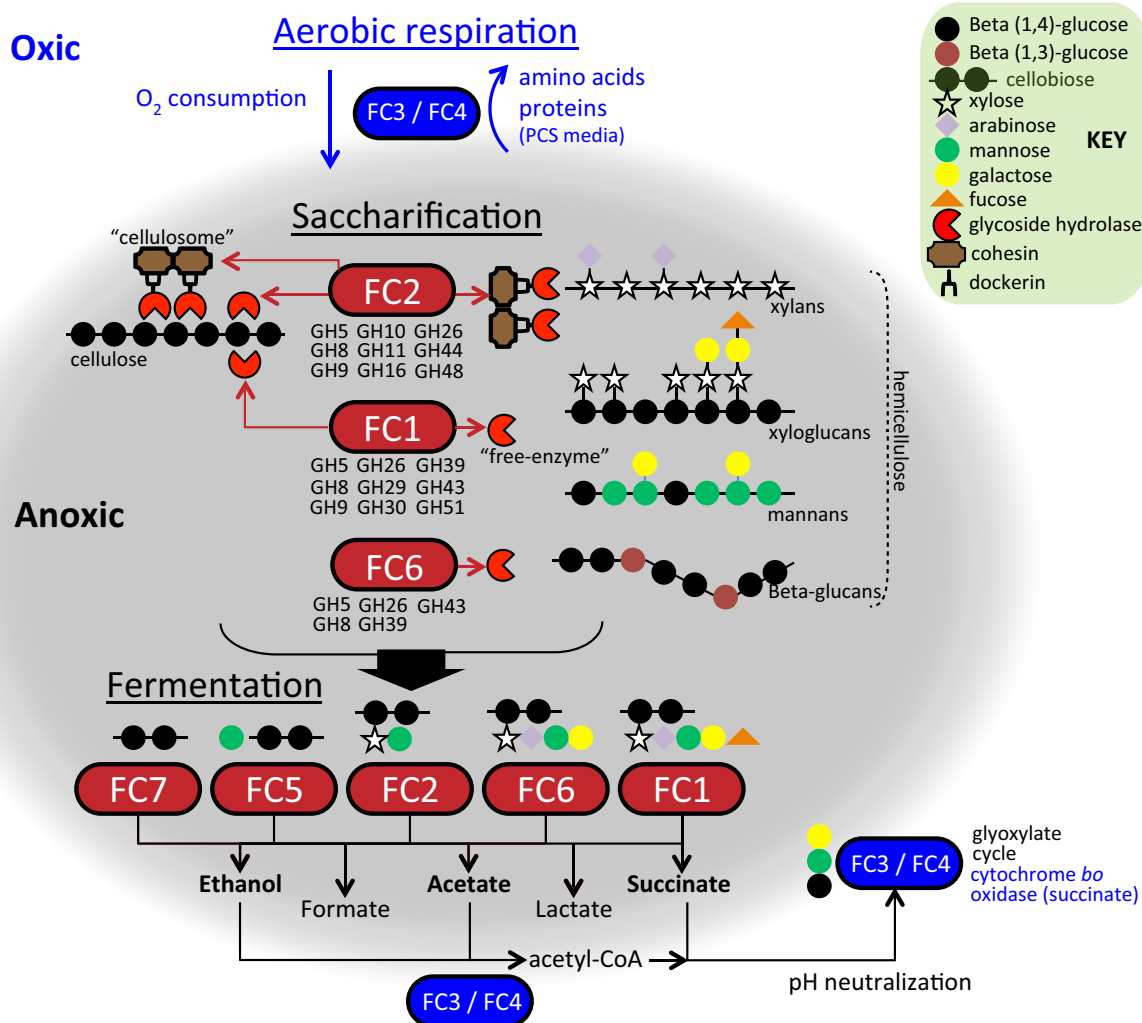
To unearth the carbohydrate-active enzymes encoded within FIRT, we used the CAZy database<sup>18</sup> as reference to identify 348 putative glycoside hydrolase (GH) domains (GH summary: Supplementary Table 13) and 227 putative carbohydrate-binding modules (CBMs) (Supplementary Table 9). A total of 50 GH domains were identified within 46 individual ORFs that also encoded a type-I dockerin domain and these GHs were thus considered cellulosomal; 27 of these GH domains were predicted to be cellulases (GH5, GH9, GH44, GH48, GH74; Fig. 1A). Additional cellulosomal hydrolytic (GH) and binding (CBMs) abilities seem directed towards xylans (GH10, GH43; CBM6, CBM22), mannans (GH26; CBM35), xyloglucans (GH16, GH74) and beta-glucans (GH16, GH55, GH81

(Fig. 1A). Approximately 86% of all GH domains were considered non-cellulosomal, however in the high coverage cellulosome-containing FC2 77% of all predicted cellulases (including endoglucanases and exoglucanases) were predicted to be cellulosomal, in accordance with the expected importance of cellulosomes in cellulose degradation<sup>19</sup>. Several phylotypes contained large GH profiles, including cellulases but devoid of any cellulosomal domains, which suggested their saccharolytic capabilities extended via employment of a free-enzyme system (Supplementary Table 13). FC6 and the high-coverage FC1 phylotype encoded comprehensive (53 and 123 GH domains, respectively) yet slightly variant glycoside hydrolase catalogues that included inferred activity against hemicellulose (e.g. GH8, GH26, GH43), suggesting that FIRT has the capability to degrade heterogeneous and complex hemicellulosic substrates (Fig. 2, Supplementary Table 13). FC1 was also found to encode putative endoglucanases (GH5 and GH9) inferring a possible role in cellulose conversion as well. FC3, FC4 and FC5 were predicted to be incapable of degrading cellulose and hemicellulose, but were found to encode oligosaccharide-degrading GH domains such as GH3 beta-glucosidases and GH96 cellobiose phosphorylases.

Metaproteomic analysis of the FIRT consortium was performed to illustrate which phylotypes were actively producing cellulolytic machineries and other polysaccharide degrading enzymes. This approach confirmed a plethora of both extracellular and cell-wall associated cellulosomal proteins and free-enzyme GHs (Supplementary Note 4). Moreover, it showed that different consortium members contribute in different ways to the enzymatic potential of the consortium (Fig. 2, Supplementary Tables S15–18). Free-enzyme



**Figure 1 | Schematic representation of cellulosomal subunits identified in the FIRT consortium.** (A) Dockerin catalog and modular architecture of the various scaffoldins identified in the FIRT metagenome. Putative scaffoldins were affiliated to the draft genome bin FC2. Note that this is a *partial* genome bins, meaning that some proteins are incomplete and that we only have access to a subset of cellulosomal proteins. Domain architecture for all cellulosomal GH domains is summarized in Supplementary Table 10. Acronyms: GH, glycoside hydrolase; CBM, carbohydrate-binding module; Cu, copper; aa, amino acid. (B) Hypothetical example of a polycellulosome assembly that was predicted via metaproteomic analysis of soluble protein-protein complexes produced by the FIRT consortium (see Supplementary Fig. 14, Supplementary Table 21, “Band 10”). The shaded structure (corresponding to GL0023450) was not detected in the proteomics experiment. However, comparisons of ORF GL0026964 (lacking the 3’ end), with the vanguard CipA scaffoldin of *C.thermocellum* would indicate that it is likely that this protein encodes the necessary type-II dockerin that is found in GL0023450 (lacking the 5’ end); see text.



**Figure 2 | Hypothetical network model summarizing putative inter-species cooperation in the FIRT enrichment.** Pathway analysis (Supplementary Table 24) and structural comparisons with the *C. straminisolvens*-containing SF356 enrichment<sup>12</sup> were used to generate predictions regarding saccharification and downstream metabolism in the FIRT consortium. Phylotypes FC3 and FC4 were predicted to be (facultative) aerobes and are thus likely to consume oxygen by utilizing substrates contained in PCS media. Crucially this provides, and subsequently maintains, the anoxic environment (shaded grey) that is required for FC1-2 and FC6 to degrade cellulose and various hemicellulose substrates, through the use of different glycoside hydrolases (GH) arranged in cellulosomes and/or free-enzyme systems. Metabolic reconstruction suggests that all anaerobic phylotypes are capable of fermenting the various sugars produced via cellulose and hemicellulose hydrolysis. The major fermentation end-products were predicted to be acetate, ethanol and succinate (bold text) as well as formate and lactate. FC3 and FC4 are able to utilize ethanol and acetate (glyoxylate cycle) as well as succinate (succinate to cytochrome *bo* oxidase electron transfer). Selected GH families are indicated for FC1-2 and FC6; for complete GH catalogs refer to Supplementary Table 13. For a detailed pathway analysis of FC1-7 refer to Supplementary Table 24.

GHs were detected from all seven draft genomes however non-cellulosomal GHs affiliated to FC1 and FC2 were most abundant and included putative cellulases (GH48, GH9, GH5) and hemicellulases (GH10, GH11, GH29, GH51). (Supplementary Tables S17–18). Cellulosomal proteins were also detected in the extracellular fraction including a multiple-type II cohesin-encoding scaffoldin (GL0004812, Fig. 1A) that does not encode any cell-anchoring domains (i.e. SLH<sup>20</sup>), suggesting its involvement in cell-free cellulosomes. The domain structure of GL0004812 (seven type-II cohesins) is comparable to the Cthe\_0736 scaffoldin from *C. thermocellum*, whose functional role is relatively unknown although it has been suggested to form cell-free extracellular polycellulosome complexes<sup>6</sup>. NanoLC-MS/MS analysis of extracellular cellulosome complexes that were isolated using native PAGE gels, frequently co-detected GL0004812 with a multiple-type I scaffoldin (GL0026964) that has resemblance to the vanguard CipA scaffoldin from *C. thermocellum* (Supplementary Fig. 14, Supplementary Tables 21–22). While the incomplete GL0026964 seems to lack the type-II dockerin required

to interact with GL0004812, we predict it is likely to encode the necessary domain on the missing 3' region of the ORF, similar or perhaps identical to the domain encoded on the also incomplete GL0023450 (Fig. 1A). This prediction is supported by the observation that GL0026964 and GL0023450 align with the N- and C-terminal regions, respectively, on the CipA scaffoldin in *C. thermocellum* (acc: YP\_005687158). Collating this information we hypothesize that GL0004812 and GL0026964 could conceivably be interconnected, forming a polycellulosome assembly that is not attached to the cell wall (Fig. 1B). Enzymatic subunits detected within the native PAGE gel bands were dominated by cellulosomal cellulases belonging to families GH48 and GH9, whereas cellulosomal GH5, GH8, GH10, GH18, GH26, GH44 and GH74 domains were also detected (Supplementary Tables 21–22).

**Metabolic reconstruction of FIRT predicts a genomic-derived rationale for inter-species cooperation.** The most distinctive feature of FIRT upon comparison with phylogenetically related





cellulolytic bacteria *C. straminisolvens*, *C. thermocellum* and *C. lento-cellum* was its ability to degrade cellulose in aerobically-prepared media, whereas these known individual cellulolytic clostridia require strict anaerobic media for growth and cellulose conversion. In their pioneering work on cellulose-degrading communities (enrichment SF356), Kato et al.<sup>12</sup> demonstrated that the cellulolytic efficiency of *C. straminisolvens* is stimulated in the presence of other aerobic and non-cellulolytic anaerobic phylotypes<sup>11,12</sup>. Despite being enriched from independently collected samples, SF356 and F1RT show structural similarities, including FC2's affiliation to *C. straminisolvens*, FC1's affiliation to *Clostridium* sp. FG4 (99.3% identity) and FC3 and FC4's affiliation to the genus *Brevibacillus*.

Our F1RT metagenomic dataset allowed for a broad genomic analysis of these intriguing observations on bacterial co-existence (summarized in Fig. 2). Genome-scale reconstruction of metabolic pathways revealed contrasting functional roles for the F1RT phylotypes and suggested several syntrophic mechanisms. (Fig. 2, Supplementary Table 24). Similar to SF356, analysis of oxygen requirements distinguished *Brevibacillus*-affiliated phylotypes FC3 and FC4 as (facultative) aerobes that are likely to consume oxygen while utilizing nutrients present or generated in the F1RT enrichment medium (Fig. 2, Supplementary Table 24). Despite the reputation of *C. straminisolvens* (similar to FC2) being the sole polysaccharide-degrading microbe in SF356, our data suggested that three of the five anaerobic phylotypes in F1RT contribute to hydrolysis of plant polysaccharides by utilizing both cellulosome (e.g. FC2) and free-enzyme systems (e.g. FC1 and FC6) (Fig. 2). In particular, GH5 endoglucanases affiliated to FC1 were detected in F1RT meta-proteomic analysis (Supplementary Table 17). This suggests a greater saccharolytic contribution by FC1 than its corresponding SF356 counterpart *Clostridium* sp. FG4, which was only deemed capable of fermenting oligosaccharides<sup>12</sup>.

The identification of putative transporters (Supplementary Table 25), beta-glucosidases (i.e. GH1, GH3; Supplementary Table 13) and cellobiose phosphorylases (GH94; Supplementary Table 13) indicates that all F1RT phylotypes are capable of “down-stream” metabolic utilization of liberated cellobioses. Since glucose and cellobiose are known to inhibit cellulases and cellulosome formation<sup>21</sup>, their utilization by non-cellulolytic phylotypes such as FC5 and FC6 is likely to help maintain F1RT's capability to continuously deconstruct cellulose (Fig. 2). Analysis of the reconstructed pathways further showed that the anaerobic phylotypes differ with respect to which sugars they are capable of fermenting to end-products such as ethanol, acetate and succinate (Fig. 2, Supplementary Table 24). The *Brevibacillus*-affiliated phylotypes FC3 and FC4 seem capable of converting ethanol and acetate to acetyl-CoA, the major input to the glyoxylate cycle commonly utilized by facultative anaerobic and aerobic bacteria (Supplementary Tables 24). In addition to providing a nutritional rationale for microbial co-existence, the predicted consumption of acids acetate and succinate (Fig. 2, Supplementary Table 24) by these non-cellulolytic bacteria is expected to alleviate the negative pH affects of acid accumulation which are known to adversely affect cellulose degradation by anaerobic clostridia<sup>22</sup>.

## Discussion

Our cumulative understanding regarding microbial plant biomass degradation is built from laboratory performance-based assessment of singular cellulolytic isolates and their enzymes. However this does not reflect the true capabilities of naturally occurring cellulolytic ecosystems, which utilize syntrophic interactions within a consortium to envelop both polysaccharide hydrolysis and downstream metabolism. Here we have utilized the recent progression in DNA sequencing and computational biology technologies to describe both the genomes and proteomes for all the as-yet uncultured members within a cellulolytic consortium. Predictive metabolic “blue-print”

analysis of all F1RT phylotypes presented a genomic rationale as to how the F1RT consortium functions, why it resisted initial aerobic culturing efforts and why it displayed structural similarity to the independently generated SF356 enrichment. In addition, our “omics” analyses allowed for the first time, the reconstruction of cellulosomes from uncultured bacteria and indications for the presence of extracellular (poly)cellulosomes, a poorly understood facet of the cellulosome “paradigm”. Moreover, our analysis demonstrated the putative operation of both cellulosome and free-enzyme systems by different phylotypes within a consortium. Indeed, recent *in vitro* studies indicate synergism between recombinant cellulosomes and free-enzymes, due to the two enzyme systems using different mechanisms for interacting with microcrystalline surfaces<sup>19,23</sup>. Our findings suggest that such a multi-system strategy for cellulose-degradation conceivably exists within naturally occurring microbial consortia. The functional capabilities of F1RT combined with the observed structural similarities with the previously described SF356 consortium would suggest that F1RT-like populations play crucial roles in natural cellulose-degrading soil ecosystems. Verification of this hypothesis would create significant insights towards understanding the impact of such populations on a broader scale.

## Methods

Soil samples were collected from Shaoguan, China, and their cellulose-degrading capabilities tested and compared. An optimal enrichment was domesticated and simplified utilizing filter paper-containing selective medium and approximately 64 continuous subcultures were performed prior to identification of a specific enrichment that demonstrated efficiency in cellulose-hydrolysis (termed F1RT). F1RT's status as a consortium with functional stability eluded further simplification via culture-based methods. Therefore we applied a metagenomic approach to decode and reconstruct the genetic components of F1RT, as well as observe the community-wide cellulosome repertoire *in silico*. In addition, metaproteomics was employed to analyze protein-protein complexes for validation of predictive annotations regarding F1RT's cellulolytic capabilities. Finally, a more extensive metabolic pathway analysis was performed to predict syntrophic relationships within the F1RT consortium. Full Methods and associated references are available in the Supplementary Information.

1. Leschine, S. B. Cellulose degradation in anaerobic environments. *Annual review of microbiology* **49**, 399–426, doi:10.1146/annurev.mi.49.100195.002151 (1995).
2. Horn, S. J., Vaaje-Kolstad, G., Westereng, B. & Eijsink, V. G. Novel enzymes for the degradation of cellulose. *Biotechnol. Biofuels* **5**, 45 (2012).
3. Rubin, E. M. Genomics of cellulolytic biofuels. *Nature* **454**, 841–845 (2008).
4. Merino, S. & Cherry, J. Progress and challenges in enzyme development for biomass utilization. *Adv. Biochem. Eng. Biotechnol* **108**, 95–120 (2007).
5. Bayer, E. A., Kenig, R. & Lamed, R. Adherence of *Clostridium thermocellum* to cellulose. *J. Bacteriol.* **156**, 818–827 (1983).
6. Fontes, C. M. & Gilbert, H. J. Cellulosomes: highly efficient nanomachines designed to deconstruct plant cell wall complex carbohydrates. *Annu. Rev. Biochem.* **79**, 655–681 (2010).
7. Lamed, R., Setter, E. & Bayer, E. A. Characterization of a cellulose-binding, cellulase-containing complex in *Clostridium thermocellum*. *J. Bacteriol.* **156**, 828–836 (1983).
8. Hess, M. et al. Metagenomic discovery of biomass-degrading genes and genomes from cow rumen. *Science* **331**, 463–467 (2011).
9. Allgaier, M. et al. Targeted Discovery of Glycoside Hydrolases from a Switchgrass-Adapted Compost Community. *Plos one* **5**, e8812 (2010).
10. Warnecke, F. et al. Metagenomic and functional analysis of hindgut microbiota of a wood-feeding higher termite. *Nature* **450**, 560–565 (2007).
11. Kato, S., Haruta, S., Cui, Z. J., Ishii, M. & Igarashi, Y. Effective cellulose degradation by a mixed-culture system composed of a cellulolytic *Clostridium* and aerobic non-cellulolytic bacteria. *FEMS Microbiol. Ecol.* **51**, 133–142 (2004).
12. Kato, S., Haruta, S., Cui, Z. J., Ishii, M. & Igarashi, Y. Stable coexistence of five bacterial strains as a cellulose-degrading community. *Appl. Environ. Microbiol.* **71**, 7099–7106 (2005).
13. Pope, P. B. et al. Isolation of Succinivibrionaceae implicated in low methane emissions from Tammara wallabies. *Science* **333**, 646–648 (2011).
14. Dupont, C. L. et al. Genomic insights to SAR86, an abundant and uncultivated marine bacterial lineage. *ISME J.* **6**, 1186–1199 (2012).
15. Teeling, H., Meyerdierks, A., Bauer, M., Amann, R. & Glockner, F. O. Application of tetranucleotide frequencies for the assignment of genomic fragments. *Environmental microbiology* **6**, 938–947, doi:10.1111/j.1462-2920.2004.00624.x (2004).
16. Sandberg, R. et al. Capturing whole-genome characteristics in short sequences using a naive Bayesian classifier. *Genome research* **11**, 1404–1409, doi:10.1101/gr.186401 (2001).



17. Richter, M. & Rosselló-Móra, R. Shifting the genomic gold standard for the prokaryotic species definition. *Proc. Natl Acad. Sci. USA* **106**, 19126–19131 (2009).
18. Cantarel, B. L. *et al.* The Carbohydrate-Active EnZymes database (CAZy): an expert resource for glycomics. *Nucleic Acids Res.* **37**, 233–238, doi:10.1093/nar/gkn663 (2009).
19. Resch, M. G. *et al.* Fungal cellulases and complexed cellulosomal enzymes exhibit synergistic mechanisms in cellulose deconstruction. *Energy Environ. Sci.* **6**, 1858–1867 (2013).
20. Bayer, E. A., Lamed, R., White, B. A. & Flint, H. J. From cellulosomes to cellosomics. *Chem. Rec.* **8**, 364–377 (2008).
21. Blair, B. G. & Anderson, K. L. Regulation of cellulose-inducible structures of *Clostridium cellulovorans*. *Can. J. Microbiol.* **45**, 242–249 (1999).
22. Kato, S. *et al.* *Clostridium straminisolvens* sp. nov., a moderately thermophilic, aerotolerant and cellulolytic bacterium isolated from a cellulose-degrading bacterial community. *Int. J. Syst. Evol. Microbiol.* **54**, 2043–2047 (2004).
23. Ding, S. Y. *et al.* How does plant cell wall nanoscale architecture correlate with enzymatic digestibility? *Science* **338**, 1055–1060 (2012).
24. Lovitt, R. W., Kell, D. B. & Morris, J. G. The physiology of *Clostridium sporogenes* NCIB 8053 growing in defined media. *J. Appl. Bacteriol.* **62**, 81–92 (1987).
25. Sridhar, J. & Eiteman, M. A. Metabolic flux analysis of *Clostridium thermosuccinogenes*: effects of pH and culture redox potential. *Appl. Biochem. Biotechnol.* **94**, 51–69 (2001).
26. Miller, D. A. *et al.* Complete genome sequence of the cellulose-degrading bacterium *Cellulosilyticum lentocellum*. *J. Bacteriol.* **193**, 2357–2358 (2011).
27. Collins, M. D. & Shah, H. N. Reclassification of *Bacteroides praeacutus* Tissier (Holdeman and Moore) in a new genus, *Tissierella*, as *Tissierella praeacuta* comb. nov. *Int. J. Syst. Bacteriol.* **36**, 461–463 (1986).
28. Shida, O. *et al.* Proposal of *Bacillus reuszeri* sp. nov., *Bacillus formosus* sp. nov., nom. rev., and *Bacillus borstelensis* sp. nov., nom. rev. *Int. J. Syst. Bacteriol.* **45**, 93–100 (1995).

## Acknowledgments

We are indebted to the faculty and staff of Beijing Genomics Institute at Shenzhen, whose names were not included in the author list but who contributed to sequencing. We also

thank Prof. Ming from the School of Bioscience and Bioengineering, South China University of Technology, who assisted us with comparative experiments of *C. thermocellum*. PBP and VGHE were funded by Norwegian Research Council projects 214042 and 221568.

## Author contributions

Jian W proposed this project. J.W. and R.Y. designed the experiments and supervised the project. Y.Z. performed the bioinformatical analysis. S.L., Q.S., C.Z., J.Z., S.C., J.C., J.Y., X.L., T.J., X.Z., S.Y. and F.L. did the experiments for screening the cellulolytic consortium, assembly accuracy assessment by PCR and other relevant assays. Y.Z., B.W. and F.T. did the metaproteomics analysis. Y.Z., P.B.P., V.G.H.E., R.Y., J.W., G.Z., H.Y., Jian W, and X.D. contributed to analysis of the results and paper writing.

## Additional information

Data are available at the NCBI Short Read Archive under accession number SRA065216. Metaproteomic and metagenomic data can also be accessed from the GigaScience database (<http://dx.doi.org/10.5524/100049>).

Supplementary information accompanies this paper at <http://www.nature.com/scientificreports>

**Competing financial interests:** The authors declare no competing financial interests.

**How to cite this article:** Zhou, Y.Z. *et al.* Omics-based interpretation of synergism in a soil-derived cellulose-degrading microbial community. *Sci. Rep.* **4**, 5288; DOI:10.1038/srep05288 (2014).



This work is licensed under a Creative Commons Attribution-NonCommercial-ShareAlike 4.0 International License. The images or other third party material in this article are included in the article's Creative Commons license, unless indicated otherwise in the credit line; if the material is not included under the Creative Commons license, users will need to obtain permission from the license holder in order to reproduce the material. To view a copy of this license, visit <http://creativecommons.org/licenses/by-nc-sa/4.0/>