

1 Aquatic biodiversity in sedimentation  
2 ponds receiving road runoff – What are  
3 the key drivers?

4 Zhenhua Sun<sup>a,\*</sup>, John E. Brittain<sup>b</sup>, Ekaterina Sokolova<sup>a</sup>, Helene Thygesen<sup>c</sup>, Svein Jakob  
5 Saltveit<sup>b</sup>, Sebastien Rauch<sup>a</sup>, Sondre Meland<sup>c,d</sup>

6 <sup>a</sup> Chalmers University of Technology, Architecture and Civil Engineering, Water  
7 Environment Technology SE-412 96 Gothenburg, Sweden

8 \*Corresponding author: [zhenhua.sun@chalmers.se](mailto:zhenhua.sun@chalmers.se), +46729611167

9 <sup>b</sup> University of Oslo: Natural History Museum, University of Oslo, P. O. 1172,  
10 Blindern0318 OSLO, Norway

11 <sup>c</sup> Norwegian University of Life Sciences, Faculty of Environmental Sciences and Natural  
12 Resource Management, PO Box 5003, 1432 Aas, Norway

13 <sup>d</sup> Norwegian Institute for Water Research (NIVA), Gaustadalléen 21, NO 0349, Oslo,  
14 Norway

## 15 Abstract

16 Recently, increased attention has been paid to biodiversity conservation provided by  
17 blue-green solutions such as engineered ponds that are primarily established for water  
18 treatment and flood control. However, little research has been done to analyse the  
19 factors that affect biodiversity in such ponds. The purpose of this study was to  
20 evaluate the influence of environmental factors on aquatic biodiversity, mainly  
21 macroinvertebrate communities, in road sedimentation ponds in order to provide a  
22 foundation for recommendations on aquatic biodiversity conservation. Multivariate  
23 statistical methods, including unconstrained and constrained analysis, were applied to  
24 examine the relationships between organisms and the water quality as well as physical  
25 factors (including plant cover). Stepwise multiple regressions indicated that the most  
26 important variables governing the variation in the biological community composition  
27 were pond size, average annual daily traffic, metals, chloride, distance to the closest  
28 pond from study pond, dissolved oxygen, hydrocarbons, and phosphorus. The  
29 presence of most taxa was positively correlated with pond size and negatively  
30 correlated with metals. Small ponds with high pollutant loadings were associated with  
31 a low diversity and dominated by a few pollution tolerant taxa such as oligochaetes. A  
32 comprehensive understanding of impacts of various environmental factors on aquatic  
33 biodiversity is important to effectively promote and conserve aquatic biodiversity in  
34 such sedimentation ponds. Our results indicate that road sedimentation ponds should  
35 be designed large enough, because large ponds are likely to provide a more  
36 heterogeneous habitat and thus contain a species rich fauna. In addition, larger ponds  
37 seem to be less contaminated due to dilution compared to smaller ponds, thereby  
38 maintaining a higher biodiversity. Finally, creating some additional ponds in the vicinity  
39 of the sedimentation ponds in areas with few water bodies would increase the  
40 connectivity that facilitates the movement of invertebrates between ponds.

41 Keywords: aquatic biodiversity; pond size; road runoff; road salt; sedimentation ponds;  
42 water quality

## 43 1. Introduction

44 It is widely accepted that roads have major environmental impacts on aquatic  
45 ecosystems. For example, habitat quality can be altered through sediment loading  
46 (Angermeier et al., 2004) and pollutants released from transportation (Le Viol et al.,  
47 2009, Scher and Thiéry, 2005). Runoff from roads contains a plethora of pollutants and  
48 is considered a major source of diffuse pollution (Bohemen and Janssen Van De Laak,  
49 2003), causing negative impacts on the receiving water bodies (Meland et al., 2010a,  
50 Jensen et al., 2014). Therefore, the national road administrations as well as the  
51 environmental authorities consider pollution reduction to be important. In most  
52 countries, blue-green solutions such as engineered sedimentation ponds and wetlands  
53 are the preferred mitigation measure for protecting receiving waters both from peak  
54 runoff volumes and elevated pollution loadings and concentrations (Meland, 2016). In  
55 addition to pollution, roads and the construction of them may disturb or even destroy  
56 aquatic habitats physically. Disruption of connectivity by roads may also negatively  
57 affect the movement of animals (Forman et al., 2003). In comparison to terrestrial  
58 habitats, freshwater habitats suffer greater biodiversity decline due to various  
59 stressors dominated by anthropogenic variables, such as habitat loss and degradation,  
60 and pollution (Hassall, 2014, Burroni et al., 2011).

61 Ponds are defined as engineered and natural water bodies between 1 m<sup>2</sup> and 2 ha in  
62 area, that may be permanent or temporary (Biggs et al., 2005). A highway  
63 sedimentation pond, which reduces the peak flow during major storm events and  
64 prevents water from either chronic or acute contamination reaching streams and lakes  
65 (Scher et al., 2004), functions as a part of an urban drainage system. Sedimentation  
66 ponds have also recently gained interest in an ecological context due to their potential  
67 capacity to conserve and promote aquatic biodiversity e.g. Le Viol et al. (2009) and  
68 Chester and Robson (2013). Only in Europe, thousands of ponds and other blue-green  
69 solutions are built along major roads (Meland, 2016). The high number may in fact  
70 underline their importance and relevance in an ecological context. Compared with  
71 other freshwater habitats, natural ponds can support significantly more species,  
72 especially rare, endemic and/or Red List species (Céréghino et al., 2007). These

73 multiple ecosystem services provided by ponds make them excellent candidates to be  
74 incorporated into road construction.

75 Some studies found that pond density is a major variable that determines aquatic  
76 macroinvertebrate richness (Gledhill et al., 2008, Staddon et al., 2010, Hassall, 2014).  
77 Gledhill et al. (2008) indicated that species richness for macroinvertebrates was higher  
78 in an area with more ponds, potentially due to higher connectivity between ponds.  
79 Hassall (2014) suggested maximizing the habitat connectivity between ponds to  
80 enhance and protect biodiversity. Plant cover is another factor that influences the  
81 distribution of aquatic invertebrates by, for instance, affecting predation and food  
82 availability (De Szalay and Resh, 2000). The richness and density of aquatic  
83 macroinvertebrates in ponds with vegetated areas are significantly greater than in  
84 ponds lacking vegetation (Hsu et al., 2011). Pond size is also likely to affect aquatic  
85 biodiversity; larger ponds tend to contain more species. However, Oertli et al. (2002)  
86 demonstrated that this biogeographic principle has limitations when it is applied to  
87 ponds; they found that it was only relevant for a few taxa, such as Odonata. Regarding  
88 pond age, Williams et al. (2008) found that compared with older ponds, 6-12-year-old  
89 ponds were able to support significantly more species and more uncommon species,  
90 while Gee et al. (1997) demonstrated that the number of taxa of macroinvertebrates  
91 was not significantly related to pond age. In addition, owing to the pollutant retention  
92 function, ponds normally contain high levels of pollution (Karlsson et al., 2010,  
93 Vollertsen et al., 2007), and may become sink-habitats and ecological traps. Chemical  
94 pollutants have lethal and sublethal effects on aquatic organisms via physiological and  
95 behavioural processes (Foltz and Dodson, 2009). Even if the concentration of a  
96 pollutant is low, chemical accumulation in roadside ponds can be an issue, as in the  
97 case of metals (Chester and Robson, 2013). Accumulation of metals and organic  
98 pollutants in the sediments may have long-term adverse effects on aquatic organisms  
99 (Grung et al., 2016), and it has been shown that metals and PAHs are easily  
100 accumulated in aquatic organisms (Meland et al., 2013, Grung et al., 2016).

101 There is still a lack of comprehensive understanding of factors that influence aquatic  
102 biodiversity (Hsu et al., 2011). Although some studies have examined the effects of

103 certain factors on biodiversity in ponds, few of them have combined water quality and  
104 physical factors into a single comprehensive analysis. Moreover, those few studies that  
105 have combined various factors, included only a very limited number of chemicals such  
106 as nutrients. Without this information, biodiversity conservation is likely to be  
107 impeded or even impossible. It has been questioned whether ponds that are designed  
108 for treating stormwater runoff are also able to enhance or maintain regional  
109 biodiversity (Hassall and Anderson, 2015). Therefore, it is necessary to examine the  
110 relationship between different factors and aquatic biodiversity.

111 The objectives of this study were to (1) assess the impact of a number of  
112 environmental factors on aquatic organisms, mainly macroinvertebrate communities,  
113 in road sedimentation ponds and (2) identify the factors that contribute the most to  
114 their abundance and diversity. Given the lack of comprehensive knowledge about the  
115 relationship between environmental factors and biological communities, both water  
116 quality and physical variables (including plant cover) were investigated in this study.  
117 The water quality variables included nutrients, metals, organic pollutants (such as  
118 PAHs and hydrocarbons), pH, dissolved oxygen (DO), total organic carbon (TOC), and  
119 conductivity. The physical variables recognized in this study as drivers of aquatic  
120 organisms were age and size of ponds, average annual daily traffic (AADT), the number  
121 of ponds/water bodies within 1 km radius, the distance to the closest pond from each  
122 study pond as well as plant cover within and around the ponds. Macroinvertebrates  
123 were selected as the main study organisms because many of them are sensitive to  
124 pollution and have rapid response to a variety of changing environmental conditions  
125 (Vermonden et al., 2009, García et al., 2014). Moreover, loss of biodiversity in  
126 macroinvertebrate communities could easily be attributed to anthropogenic pressure  
127 (Giorgio et al., 2016).

## 128 2. Material and methods

### 129 2.1 Study area

130 Twelve highway sedimentation ponds situated along the major four-lane highway E6  
131 were included in the present study (Figure 1). One sedimentation pond is located in

132 the City of Oslo, while five and six sedimentation ponds are located in the counties of  
133 Akershus and Østfold, respectively. The ponds were visited four times during the  
134 study: in April, June, August and October 2012. Water and biological samples were  
135 obtained on each visit.

## 136 2.2 Field work and laboratory analyses

### 137 2.2.1 Water quality variables

138 Twenty-eight water quality variables were analysed in this study. Water samples were  
139 collected close to the inlet of the ponds in April, June, August and October 2012.  
140 Sampling was performed using separate bottles for different parameters: one 125 mL  
141 acid washed polyethylene (PE)-bottle for metals (aluminium (Al), antimony (Sb),  
142 arsenic (As), barium (Ba), cadmium (Cd), calcium (Ca), chromium (Cr), cobalt (Co),  
143 copper (Cu), iron (Fe), lead (Pb), magnesium (Mg), manganese (Mn), mercury (Hg),  
144 molybdenum (Mo), nickel (Ni), potassium (K), silicon (Si), silver (Ag), sodium (Na),  
145 strontium (Sr) and zinc (Zn)); one 1 L glass bottle for oil (hydrocarbons); one 1 L glass  
146 bottle for polycyclic aromatic hydrocarbons (US EPA 16 PAHs); one 125 mL PE-bottle  
147 for the anions, chloride (Cl<sup>-</sup>), nitrate (NO<sub>3</sub><sup>-</sup>) and sulphate(SO<sub>4</sub><sup>2-</sup>); one 125 mL PE-bottle  
148 for total organic carbon (TOC). The chemical analyses were performed by ALS  
149 Laboratory Group, Skøyen, Oslo.

150 Dissolved oxygen (DO), conductivity, pH and temperature were measured near the  
151 inlet of each pond. In the first two surveys, handheld probes Extech Exstick 11 DO600  
152 and Extech Exstick EC500 were used, while during the last two surveys, a multi-  
153 parameter probe YSI 6600 V2-4 was used.

### 154 2.2.2 Physical variables

155 The data on several physical variables considered to be relevant for the composition of  
156 the macroinvertebrate community were collected either from digital maps (Norwegian  
157 Mapping Authorities) or directly from the Norwegian Public Roads Administration  
158 (NPRA) (Table 1). Plant cover within and around the ponds was estimated in the field  
159 as “little”, “medium” and “extensive” and represented in the model with percentages  
160 33%, 66% and 100%, respectively.

### 161 2.2.3 Aquatic organisms

162 Aquatic organisms, including 91 macroinvertebrates, 2 zooplankton (Cladocera and  
163 Copepoda) and 3 amphibians, were sampled using a kick net with an opening of 30×30  
164 cm and a mesh size of 0.45 mm. The kick samples were taken at the bottom of the  
165 pond, if the substrate was stony; and at approximately 50 cm above the bottom, if the  
166 substrate was muddy or containing a lot of organic material. In all cases, five sweeps  
167 were made. Sampling was done once in the inlet basin and twice on either side of the  
168 main pond.

169 In addition to kick sampling, traps made of 1.5 L transparent plastic bottles were used.  
170 The bottles were cut in two where the bottleneck starts to form the spout; the  
171 bottleneck was turned around placing the spout inside the bottle and attached using  
172 transparent tape. Two traps were placed into the main pond at the places where the  
173 kick samples were taken and left for 1 – 4 days, depending on time of the year. After  
174 sampling, the organisms, except larger specimens such as amphibians, were preserved  
175 in 70% ethanol.

176 Biological samples were sorted in the laboratory and identified to order, family, or  
177 species level: Odonata were identified to family level, while Trichoptera,  
178 Ephemeroptera, Coleoptera, Plecoptera and Heteroptera were, where possible,  
179 identified to species level. Literature that was used for identification included Elliott et  
180 al. (1988), Hynes (1993), and Nilsson (1996, 1997).

### 181 2.3 Statistical analyses

182 Both univariate and multivariate statistical methods were applied to analyse the  
183 collected data. The IBM SPSS Statistics Version 22 was used for univariate statistical  
184 analysis, while the CANOCO5 software (Microcomputer Power) was used for  
185 multivariate statistical analysis. The different statistical methods used in the present  
186 study are summarised in a schematic overview (Figure 2).

#### 187 2.3.1 Water quality

188 The general trends in water quality were analysed using principal component analysis  
189 (PCA). The data were  $\log(x+1)$  transformed prior to the PCA in order to reduce the

190 skewness and improve the normality of the data. The concentrations below the limit of  
191 quantification (LOQ) were substituted with  $\frac{1}{2}$  LOQ. If the concentrations for a variable  
192 were below LOQ in more than 15% of the total number of samples, the variable was  
193 excluded from the analysis. This was the case for PAH compounds,  $\text{NO}_3^-$  and Hg.

194 To disclose any differences in water quality between the different sedimentation  
195 ponds, one-way analysis of variance (ANOVA) followed by Tukey post-hoc tests were  
196 conducted on the sample scores extracted from axes 1 and 2 of the PCA analysis for  
197 the water quality data. The sample scores were checked for normality and  
198 homogeneity prior to the analysis. Results with  $p < 0.05$  were considered statistically  
199 significant.

200 Datasets with water quality variables often display high co-linearity. The risk of  
201 overfitting the RDA model is high when too many explanatory variables are included.  
202 For example, it is likely that some of the explanatory variables become statistically  
203 significant just by chance. Therefore, the number of water quality variables was  
204 reduced by using sample scores extracted from axis 1 of the PCA analysis for metals  
205 (Figure S3) as a proxy for metal concentrations. In this way, the number of variables  
206 was reduced from 28 to 7, as well as reducing the risk of overfitting the RDA model.

### 207 2.3.2 Aquatic organisms – community analyses

208 The evaluation of the biological community composition was conducted by using  
209 ordination analyses (multivariate statistics) in several steps (Figure 2). Prior to the  
210 analyses, the data were  $\log(x+1)$  transformed. A Detrended Correspondence Analysis  
211 (DCA) was applied to disclose whether the data followed a linear or a unimodal  
212 response. The response is defined according to the species turnover in the data,  
213 measured as standard deviation (SD) units and termed gradient length in the DCA  
214 (Šmilauer and Lepš, 2014). If the length is less than 3 SD, the linear method is  
215 recommended; if the length is more than 4 SD, the unimodal method is recommended.  
216 The output of the DCA in this study showed that the data had a gradient of 3.8 SD; and  
217 therefore no clear decision whether the data followed a linear or unimodal response  
218 could be made. Both linear and unimodal methods were applied to test the biological  
219 data. The results showed that the linear methods explained more variation than the



220 unimodal methods. Hence, PCA (unconstrained) and Redundancy Analysis (RDA,  
221 constrained) were used in the final analyses. PCA was undertaken to reveal the  
222 maximum variation in the biological community, while RDA was used to evaluate the  
223 relationship between the biological community composition and the environmental  
224 data (i.e. water quality and physical variables).

225 An RDA with a global permutation test (RDA global) was conducted on the entire  
226 environmental dataset to disclose the overall impact of the variables on the  
227 community composition. In addition, the output of the significance test ( $p < 0.05$ ) was  
228 used as a criterion for conducting a second RDA with forward selection (Šmilauer and  
229 Lepš, 2014). The RDA with forward selection was conducted in order to disclose a  
230 subset of the most important and significant environmental variables. The conditional  
231 (partial) effect of each variable was tested, and the effect size and significance of  
232 variables depend on the already selected variable(s). Month was included as a  
233 covariate in order to remove any seasonal effects on the community composition.  
234 After the selection, the effects of the selected groups of explanatory variables (water  
235 quality and physical groups), including their overlap, were quantified using variation  
236 partitioning. Monte Carlo permutation tests (499 permutations,  $p < 0.05$ ) were used  
237 for determination of the statistical significance in the RDAs. The significance tests  
238 performed during the forward selection were conducted without  $p$ -adjustment (i.e.  
239 preventing Type I error). This is considered valid as the number of variables (e.g.  
240 metals) was reduced prior to the RDA global test and in addition the RDA global test  
241 was significant (Šmilauer and Lepš, 2014). Each water quality variable was represented  
242 by four values measured during the sampling campaign (12 ponds  $\times$  4 months,  $n = 48$ ),  
243 while each physical variable was represented by one value constant during the  
244 sampling campaign (12 ponds  $\times$  1,  $n = 12$ ). Thus, the dataset for the physical variables  
245 was unequal in size to the datasets for the water quality and the biological community.  
246 In order to run the RDA with the complete environmental dataset (i.e. water quality  
247 and physical variables), the physical dataset was upscaled from  $n = 12$  to  $n = 48$ .  
248 Therefore, the tests of the physical variables must be interpreted with caution as the  
249 number of the degrees of freedom is incorrect for those variables.

## 250 3. Results

### 251 3.1 General trends in water quality variables

252 The concentrations for the water quality variables are presented in Table S1-S3. The  
253 priority metals that are able to induce toxicity at low levels of exposure are As, Cd, Cr,  
254 Pb, Ni and Hg (Tchounwou et al., 2012, Beasley G, 2002) . In addition, Zn and Cu are  
255 also typical pollutants from road runoff. Although Zn and Cu are considered as  
256 essential elements for biological functioning, an excess can lead to tissue damage  
257 (Tchounwou et al., 2012). The concentrations of selected priority pollutants were  
258 compared to the Environmental Quality Standards (EQS) (Tables S4 and S5) according  
259 to the EU Water Framework Directive (EU WFD) and the Norwegian River Basin  
260 Specific Pollutants (Council Regulation (EC), 2008, Pettersen, 2016). Although the EQS  
261 for metals are based on the dissolved fraction and in our study the total  
262 concentrations were measured, the comparison indicates which metals may appear at  
263 toxic concentrations and have an impact on the aquatic organisms in the  
264 sedimentation ponds.

265 The ecological status of surface water is categorized into classes from 1 to 5, with 1  
266 being background level and 5 being very poor quality (Pettersen, 2016). For As, most  
267 ponds belonged to class 2, and some belonged to class 3; only the pond Taraldrud  
268 north (in August) belonged to class 4. For Cr, most ponds belonged to class 2, while the  
269 ponds Såstad (in August and October), Fiulstad (in October), Idrettsveien (in October)  
270 and Enebekk (in October) belonged to class 4. For Cd, most ponds had very low  
271 concentrations and belonged to class 1, and only the pond Såstad (in October)  
272 belonged to class 5. For Pb, 30 samples belonged to class 2, and 17 samples belonged  
273 to class 3; only the pond Karlshusbunn (in October) belonged to class 5. For Ni, most  
274 ponds belonged to class 2, and some belonged to class 3; only the ponds Taraldrud  
275 north (in April and August) belonged to class 1. For Zn, 11 samples belonged to class 2,  
276 and 25 samples belonged to class 4; the ponds that belonged to class 5 were Nøstvedt  
277 (in April, and October), Vassum (in June, August and October), Enebekk (in April, June,  
278 August and October), Såstad (in October), Idrettsveien (in October) and Karlshusbunn  
279 (in October). For Cu, 26 samples belonged to class 2, and 17 samples belonged to class

280 4; the ponds that belonged to class 5 were Vassum (in April, June and October),  
281 Fiulstad (in October) and S st d (in October). As mentioned above, Hg was not  
282 considered in the analysis, since the concentrations in most samples were below LOQ.

283 Chloride (Cl<sup>-</sup>) concentrations, representing road salt pollution, were compared to the  
284 criteria set by the United States Environmental Protection Agency (US EPA): a  
285 maximum concentration of 860 mg/L and a continuous concentration of 230 mg/L  
286 (United States Environmental Protection Agency, 2017). The Cl<sup>-</sup> concentrations were  
287 above 230 mg/L in 22 samples, while in the pond Vassum in June the concentration  
288 was 2090 mg/L. The DO concentrations in most of the ponds were above 10 mg/L, and  
289 none were below the threshold set by the US EPA of 2.3 mg/L (EPA, 2000). Therefore,  
290 the DO levels were generally good.

291 Axes 1 and 2 in the PCA captured 44% and 18% of the total variation in the water  
292 quality data, respectively (Figure 3). Many of the water quality variables were  
293 positively correlated to each other, and as displayed in the ordination plot some  
294 clusters were evident. For example, the cluster of Fe, Co, Si, Mn, Mo, Cd and Ni was  
295 highly correlated with axis 1, while the cluster of Zn, Pb, P, Al and Cr and the cluster of  
296 TOC, SO<sub>4</sub><sup>2-</sup>, Ba, K, Mg, Ca, Sr were located on either side of the first cluster. The cluster  
297 of pH, hydrocarbons and Sb, and the cluster of Cl<sup>-</sup>, Na, conductivity and DO were  
298 negatively correlated with each other along axis 2. The PCA revealed that there were  
299 differences in water quality between different sedimentation ponds.

300 To better illustrate the differences in water quality between ponds, the sample scores  
301 from PCA axes 1 and 2 were displayed in box-plots (Figure 3) and tested for statistical  
302 differences using the ANOVA followed by Tukey post-hoc tests. Based on the sample  
303 scores extracted from axis 1, some of the ponds were significantly different from each  
304 other. The ponds Vassum, S st d, Fiulstad, Idrettsveien and Enebekk appeared to have  
305 higher concentrations for the variables related to axis 1, while Taraldrud north and  
306 south, Skullerud and Taraldrud crossing appeared to have lower concentrations for the  
307 variables related to axis 1. Based on the sample scores extracted from axis 2, none of  
308 the ponds were significantly different. The ponds S st d, Taraldrud crossing, Fiulstad,

309 Idrettsveien and Karlshusbunn appeared to have high concentrations for the variables  
310 related to axis 2, mainly because of the road salt (indicated by  $\text{Cl}^-$ , Na and  
311 conductivity).

312 According to ANOVA followed by Tukey post-hoc tests, there were no statistically  
313 significant differences in water quality between sampling periods when using PCA  
314 scores extracted from axis 1, but there were statistically significant differences for PCA  
315 scores extracted from axis 2 (Figure S1-S2). The PCA scores extracted from axis 2  
316 indicated that the lowest and highest levels of road salt ( $\text{Cl}^-$ , Na and conductivity) were  
317 observed in October and June, respectively (3.6 – 2090 mg/L). The opposite pattern  
318 was observed for pH (4.3 – 9.7).

### 319 3.2 Biological community composition in relation to water quality and physical 320 variables

321 Of the 96 taxa found in the studied sedimentation ponds (Tables S6.1 – 6.8), 7 taxa  
322 occurred in all investigated ponds (Hydracarina, Hirudinea, *Notonecta reuteri*  
323 (Hemiptera), Chironomidae, Chaoboridae, *Caenis horaria* (Ephemeroptera),  
324 Coenagrionidae), while 32 taxa were present in two or more of the sedimentation  
325 ponds.

326 The result of the unconstrained PCA for biological data showed that 40% of the  
327 variation in the biological community could be explained by axes 1 and 2; most taxa  
328 were gathered along axis 1 and the rest along axis 2 (Figure S4). For clarity, only 25  
329 taxa that were well characterised by the first four ordination axes are displayed; the  
330 same was done for RDA.

331 The results of PCA for water quality variables (Figure 3A) showed that all metals were  
332 correlated with each other as well as with  $\text{SO}_4^{2-}$ ; thus,  $\text{SO}_4^{2-}$  was analysed together with  
333 metals. PCA was repeated for metals (including  $\text{SO}_4^{2-}$ ) to extract the PCA scores. Axis 1  
334 from PCA for metals (including  $\text{SO}_4^{2-}$ ) explained 58% of the variance (Figures S3); thus,  
335 the PCA scores extracted from axis 1 were used (denoted PCA1 (M)). Moreover,  $\text{Cl}^-$   
336 content was highly correlated with conductivity and Na; thus, the concentration of  $\text{Cl}^-$   
337 was used to represent road salt. Therefore, seven variables (TOC, DO, P, hydrocarbons,

338 Cl<sup>-</sup>, pH and PCA1 (M)) were used in the RDA to analyse the effects of water quality  
339 variables on the biological community composition.

340 The RDA analysis showed that the overall RDA global model (Figure S5) was significant  
341 ( $p = 0.002$ ). The RDA with forward selection showed that out of the 14 variables  
342 (metals (including SO<sub>4</sub><sup>2-</sup>), P, TOC, DO, pH, hydrocarbons, Cl<sup>-</sup>, size, age, AADT, number of  
343 ponds/water bodies within 1 km, distance to the closest pond from study pond, as well  
344 as plant cover within and around the ponds), 8 variables were statistically significant:  
345 metals (including SO<sub>4</sub><sup>2-</sup>), Cl<sup>-</sup>, P, DO, hydrocarbons, AADT, distance and pond size (Figure  
346 4); the simple effects of each variable are presented in Table S7 (i.e. the explained  
347 variation as if the variable is used alone in the RDA). Axes 1 and 2 explained 19% and  
348 7% of the variation in the biological community composition. The RDA plot indicated  
349 that the variable pond size had the greatest impact on the biological community  
350 composition. Metals (including SO<sub>4</sub><sup>2-</sup>) and AADT also contributed considerably to  
351 explaining the variation in the biological community composition. Most taxa were  
352 positively correlated to the pond area, with some exceptions, e.g. Hydraenidae and  
353 Oligochaeta. Most taxa were positively correlated with AADT. Most taxa were  
354 negatively correlated with metals, with some exceptions, e.g. *Phryganea bipunctata*  
355 (Trichoptera) and Oligochaeta. Moreover, most taxa were negatively correlated with  
356 the distance to the nearest neighbouring pond. Among the 25 dominant taxa, some  
357 taxa were positively correlated with Cl<sup>-</sup>, e.g. *Rana* sp, *Notonecta* sp. Nymphs  
358 (Heteroptera) and *Semblis atrata* (Trichoptera), while others were negatively  
359 correlated with Cl<sup>-</sup>, e.g. *Cloeon inscriptum* and *Paraleptoplebia* sp. (Ephemeroptera).  
360 Some taxa were positively correlated with P and DO, while other taxa were negatively  
361 correlated. Compared with the other selected variables, hydrocarbons had the least  
362 contribution to the biological community composition; most organisms were positively  
363 correlated with hydrocarbons.

364 The result of the RDA after removing the seasonal effect (i.e. month used as a  
365 covariate) showed that the variation in taxa explained by the eight selected variables  
366 decreased from 42% to 39%. This indicates that seasons had a minor influence on the  
367 variation in the biological community composition in the present study.

368 The variation partitioning (Table 2) showed that the group of water quality variables  
369 (metals (including  $\text{SO}_4^{2-}$ ),  $\text{Cl}^-$ , DO, P, and hydrocarbons) explained 48%, while the group  
370 of physical variables (size of ponds, AADT, and distance to the nearest neighbouring  
371 pond) explained 41% of the total variation in the biological community composition.  
372 The shared effects of these two groups of variables accounted for 11% of the total  
373 variation.

#### 374 4. Discussion

375 Due to the lack of studies that combine water quality and physical variables into a  
376 single analysis of species community over several ponds, there is a lack of  
377 understanding of the relative impacts of such variables on species richness (Hassall et  
378 al., 2011). In our study, the effects of water quality and physical variables on 96 taxa,  
379 including 91 macroinvertebrates, 2 zooplankton and 3 amphibians, were analysed.  
380 Among the identified taxa, 4 macroinvertebrate species (*Brychius elevates*, *Hygrotus*  
381 *confluens*, *Ilybius guttiger*, *Ilybius quadriguttatus*) and one amphibian species (*Triturus*  
382 *vulgaris*) belong to the “near threatened” category, while *Plateumaris braccata*  
383 belongs to the “vulnerable” category in the Norwegian Red List (Artsdatabanken,  
384 2011). The water quality variables included 19 metals, hydrocarbons, P,  $\text{Cl}^-$ ,  $\text{SO}_4^{2-}$ , TOC,  
385 DO, pH and conductivity. It should be stressed that the sampling strategy in the  
386 present study did not aim to collect water samples after runoff episodes. Therefore,  
387 the measured concentrations can be considered representative of the general water  
388 quality levels in the studied ponds and not an indication of extreme concentrations  
389 that may occur after runoff episodes. Nevertheless, some of the metals were present  
390 at relatively high concentrations.

391 Pond size is the most important physical variable that was statistically selected by RDA  
392 forward selection method. The results showed that large ponds can support more  
393 species than small ones; this is in accordance with the conventional species-area  
394 relationships. Gotelli and Graves (1996) mentioned that small ponds have low species  
395 richness due to their higher vulnerability to disturbance, such as degradation resulted  
396 from pollutant loads. Nevertheless, the results of studies involving the pond size are  
397 conflicting. Oertli et al. (2002) found that the species-area relationship had limitations

398 when it was applied to ponds. The species-area relationship was apparent for Odonata,  
399 but not relevant for Coleoptera and Sphaeriidae (Oertli et al., 2002). Biggs et al. (2005)  
400 also found that the trend that larger ponds support more species was stronger for  
401 macrophytes, but weaker for invertebrates. A possible explanation to such  
402 phenomenon might be the small island effect, in which species-area relationships are  
403 not valid for small pond sizes (Hassall et al., 2011, Lomolino, 2000). The small island  
404 effect suggests that in small pond patches, extrinsic, stochastic processes have a larger  
405 effect compared to intrinsic, ecological processes in structuring communities (Hassall  
406 and Anderson, 2015). In urban environments, such effect could be aggravated by  
407 numerous interacting stressors that act on top of natural processes (Hassall and  
408 Anderson, 2015).

409 Followed by pond size, AADT was selected by the RDA as the second most important  
410 physical variable. Most taxa appeared to be positively correlated with AADT; this is a  
411 bit unexpected as more traffic may be expected to cause higher concentrations of  
412 contaminants in road runoff and subsequently in the receiving ponds. However, in our  
413 study, the AADT was the highest in the areas with the largest ponds. Therefore,  
414 dilution may have been playing a crucial role in reducing the contaminant  
415 concentrations in these sedimentation ponds. Another possible explanation is that  
416 there is no obvious correlation between AADT and pollutants. For example, Kayhanian  
417 et al. (2003) found that although AADT has an influence on most road runoff  
418 constituents concentrations, there was no direct linear correlation between pollutant  
419 concentration in road runoff and AADT.

420 Most taxa were negatively correlated with the distance from the study pond to the  
421 nearest neighbouring pond. This is potentially attributed to the higher connectivity  
422 that facilitates the mobility of invertebrates between ponds (Gledhill et al., 2008). The  
423 importance of nearby ponds is in agreement with previous studies, which indicate that  
424 pond density and connectivity appeared to be the major contributing variables to  
425 biodiversity (Noble and Hassall, 2015, Staddon et al., 2010). This highlights the  
426 importance of pond and wetland density to maintain metapopulations of species.

427 Hassall (2014) referred to such kind of networks as “pondscapes”, constituting a  
428 network of distributed discrete habitat patches.

429 Most taxa were negatively correlated with the metals concentrations in water. Metals  
430 in road runoff arise from various sources, including automobile sources (e.g. fuel  
431 components, brakes and tyres), traffic barriers, road signs and road lightning  
432 infrastructures (Meland, 2010). It has been demonstrated that increases in heavy  
433 metal concentrations lead to decrease in biodiversity (Phillips et al., 2015). Although  
434 several metals can act as essential nutrients for living organisms (e.g. Ca, Na, K, Mg, Fe,  
435 Zn, Cr and Se), these metals are harmful to living organisms when they reach excessive  
436 levels or enter certain oxidation states (Weiner, 2008). Compared to the WFD EQS for  
437 the priority pollutants and the River Basin Specific Pollutants for Norway (Pettersen,  
438 2016), the concentrations of Zn and Cu in most ponds in our study were high, while the  
439 concentrations of As, Cd, Cr, Ni and Pb were generally relatively low, but could  
440 occasionally reach high levels. It is important to stress that we did not collect water  
441 samples directly after runoff episodes when the concentrations are believed to be the  
442 highest.

443 The aquatic organisms were greatly affected by  $\text{Cl}^-$ . The reason why  $\text{Cl}^-$  was quite high  
444 in some ponds (the maximum concentration recorded in our study reached 2090 mg/L)  
445 is because sodium chloride (NaCl) is widely used on roads in Norway as a de-icing  
446 agent. Thus, road runoff and snowmelt-induced runoff normally contain high  
447 concentrations of  $\text{Cl}^-$  in these areas during winter and spring, thereby considerably  
448 affecting the water quality of receiving ponds. Different from rainstorms, snowmelt  
449 runoff can persist for several days to weeks. Furthermore, in the areas with frozen soil,  
450 both pervious and impervious surfaces contribute with snowmelt runoff (Semadeni-  
451 Davies, 2006). Marsalek et al. (1999) has demonstrated that in winter, road runoff  
452 exhibited the highest frequency of severe toxic effects. The elevated concentration of  
453  $\text{Cl}^-$  can cause toxicity due to the osmotic stress related to overall ionic strength (Elphick  
454 et al., 2011, Blasius and Merritt, 2002). In addition, high  $\text{Cl}^-$  concentrations may kill  
455 roadside vegetation resulting in increased erosion and sediment load that have a  
456 negative impact on the abundance of invertebrates (Blasius and Merritt, 2002). Other



457 severe consequences resulting from  $\text{Cl}^-$  deposition and retention are the prevention of  
458 water circulation leading to anoxic conditions in bottom waters, and release of trapped  
459 metals from sediment causing lethal toxicity to pond organisms (Van Meter et al.,  
460 2011). Therefore, due to the characteristics of snowmelt runoff and excessive amount  
461 of  $\text{Cl}^-$ , future studies need to further investigate the influence of road salt on biological  
462 community composition during winter and spring, especially in cold regions.

463 Although of apparently lower importance, P, DO, and hydrocarbons were included as  
464 statistically significant variables in the forward selection procedure. P is the primary  
465 growth limiting nutrient in most freshwater systems (Yang et al., 2009). Some taxa  
466 were positively related to the P concentration, but some were negatively correlated.  
467 Houlihan et al. (2006) also found that total species richness in wetlands was negatively  
468 correlated with water nutrient levels. If nutrient loading rates exceed the critical level,  
469 species composition can be altered over a short time (Verhoeven et al., 2006). For  
470 example, P concentration in the runoff could result in eutrophication in receiving  
471 water bodies. Eutrophication is considered to be one of the main impacts on small  
472 standing water bodies (Menetrey et al., 2005) causing episodes of noxious blooms,  
473 reduction in aquatic macrophyte communities and the depletion of DO in bottom  
474 waters (Conley, 1999). As one of the crucial limnological variables, DO affects the  
475 distribution of many species and maintains aquatic life (de Moura Guimaraes Souto et  
476 al., 2011, Connolly et al., 2004). In addition, DO plays the crucial role in speciation of  
477 metals, influencing their biomobility and toxicity (Rabajczyk, 2010). Since the DO  
478 concentrations in the studied ponds were above the threshold value for the aquatic  
479 organisms to live, DO levels do not appear to be a major limiting factor in the present  
480 study. Nevertheless, the RDA plot indicated that different taxa may have different  
481 oxygen requirements and tolerance to hypoxia; this can be attributed to a diverse  
482 array of structural and behavioural respiratory adaptations among various aquatic  
483 organisms (Connolly et al., 2004). Lastly, there was an indication of a small positive  
484 correlation between the hydrocarbons and the abundance of macroinvertebrates  
485 which may be somewhat obscure. Further research is needed to evaluate the effects of  
486 hydrocarbons on biological community composition in sedimentation ponds.

## 487 5. Conclusions

488 We studied the impacts of multiple environmental factors, including water quality and  
489 physical variables, on the biological community composition in sedimentation ponds.

490 In the present analysis, the key variables controlling the aquatic biodiversity were the  
491 pond size, distance to the closest pond from study pond, AADT and a combination of  
492 various contaminants such as metals, phosphorus, road salt, dissolved oxygen and  
493 hydrocarbons. The pond size plays a crucial role in affecting biological community  
494 composition, as more species tend to live in the larger ponds. Our study indicates that  
495 sedimentation ponds have the potential to contribute to biodiversity conservation. In  
496 order to promote and conserve aquatic biodiversity in road sedimentation ponds,  
497 larger ponds would be preferable due to the “species-area effect” and the dilution of  
498 harmful pollutants. In addition, the shorter distance between ponds allows organisms  
499 to spread more easily due to the higher connectivity, which maintains biodiversity.

500 More studies are still needed to investigate the influence of additional environmental  
501 factors using different approaches and methods, such as process-based modelling.

502 Furthermore, measurements of the pollutants in the pond sediments, which may act  
503 as a more accurate proxy for the overall pollution level compared to water samples,  
504 should be included in such studies. These studies could then provide recommendations  
505 for optimising aquatic biodiversity in the road sedimentation ponds.

## 506 Authors' Contributions

507 Z. Sun, S. Meland, E. Sokolova, S. Rauch, S. Saltveit and J. Brittain gave substantial  
508 contributions to conception and design; H. Thygesen, S. Saltveit and J. Brittain  
509 collected the data; Z. Sun and S. Meland analysed the data; Z. Sun drafted the article;  
510 S. Meland, E. Sokolova, S. Rauch and J. Brittain revised the article critically for  
511 important intellectual content. All authors gave final approval for publication.

## 512 Acknowledgements

513 This study was funded by the Norwegian Public Road Administration (Statens  
514 Vegvesen) as part of the Research and Development Programme Nordic Road Water  
515 (NORWAT, [www.vegvesen.no/norwat](http://www.vegvesen.no/norwat)) and the Ferry-free E39 programme.

516 Ole Wiggo Røstad verified the identification of Dytiscidae. Trond Bremnes verified  
517 Trichoptera and checked random samples of Heteroptera and Odonata.

## 518 Colour for figures

519 Colour should be used for all figures in print.

## 520 References

- 521 ANGERMEIER, P. A., WHEELER, A. P. & ROSENBERGER, A. E. 2004. A conceptual framework for  
522 assessing impacts of roads on aquatic biota. *Fisheries*, 29.
- 523 ARTSDATABANKEN 2011. Norwegian Red List for Species 2010. Trondheim.
- 524 BEASLEY G, K. P. 2002. Reviewing the impact of metals and PAHs on macro invertebrates in  
525 urban watercourses. *Progress in Physical Geography*, 26.
- 526 BIGGS, J., WILLIAMS, P., WHITFIELD, M., NICOLET, P. & WEATHERBY, A. 2005. 15 years of pond  
527 assessment in Britain: results and lessons learned from the work of Pond Conservation.  
528 *Aquatic Conservation: Marine and Freshwater Ecosystems*, 15, 693-714.
- 529 BLASIUS, B. J. & MERRITT, R. W. 2002. Field and laboratory investigations on the effects of road  
530 salt (NaCl) on stream macroinvertebrate communities. *Environmental Pollution*, 120,  
531 219-231.
- 532 BOHEMEN, H. D. V. & JANSSEN VAN DE LAAK, W. H. 2003. The Influence of Road Infrastructure  
533 and Traffic on Soil, Water, and Air Quality. *Environmental Management*, 31, 0050-  
534 0068.
- 535 BURRONI, N. E., MARINONE, M. C., FREIRE, M. G., SCHWEIGMANN, N. & LOETTI, M. V. 2011.  
536 Invertebrate communities from different wetland types of Tierra del Fuego. *Insect*  
537 *Conservation and Diversity*, 4, 39-45.
- 538 CÉRÉGHINO, R., BIGGS, J., OERTLI, B. & DECLERCK, S. 2007. The ecology of European ponds:  
539 defining the characteristics of a neglected freshwater habitat. *Hydrobiologia*, 597, 1-6.
- 540 CHESTER, E. T. & ROBSON, B. J. 2013. Anthropogenic refuges for freshwater biodiversity: Their  
541 ecological characteristics and management. *Biological Conservation*, 166, 64-75.
- 542 CONLEY, D. 1999. Biogeochemical nutrient cycles and nutrient management strategies.  
543 *Hydrobiologia*, 410, 87-96.
- 544 CONNOLLY, N. M., CROSSLAND, M. R. & PEARSON, R. G. 2004. Effect of low dissolved oxygen  
545 on survival, emergence, and drift of tropical stream macroinvertebrates. *Journal of the*  
546 *North American Benthological Society*, 23, 251-270.
- 547 COUNCIL REGULATION (EC) 2008. Directive 2008/105/EC of the European Parliament and of  
548 the Council of 16 December 2008 on environmental quality standards in the field of  
549 water policy, amending and subsequently repealing Council Directives 82/176/EEC,  
550 83/513/EEC, 84/156/EEC, 84/491/EEC, 86/280/EEC and amending Directive  
551 2000/60/EC of the European Parliament and of the Council.
- 552 DE MOURA GUIMARAES SOUTO, R., GOMES FACURE, K., PAVANIN, L. A. & BUZÁ JACOBUCCI, G.  
553 2011. Influence of environmental factors on benthic macroinvertebrate communities  
554 of urban streams in Vereda habitats, Central Brazil. *Acta Limnologica Brasiliensia*, 23,  
555 14.

556 DE SZALAY, F. A. & RESH, V. H. 2000. Factors influencing macroinvertebrate colonization of  
557 seasonal wetlands: responses to emergent plant cover. *Freshwater Biology*, 45, 295-  
558 308.

559 ELLIOTT, J. M., HUMPECH, U. H. & MACAN, T. T. 1988. *Larvae of the British Ephemeroptera: a*  
560 *key with ecological notes*. Ambleside, Cumbria, Freshwater Biological Association.

561 ELPHICK, J. R. F., BERGH, K. D. & BAILEY, H. C. 2011. Chronic toxicity of chloride to freshwater  
562 species: Effects of hardness and implications for water quality guidelines.  
563 *Environmental Toxicology and Chemistry*, 30, 239-246.

564 EPA 2000. Ambient Aquatic Life Water Quality Criteria for Dissolved Oxygen (Saltwater): Cape  
565 Cod to Cape Hatteras. Washington, DC: United States Environmental Protection  
566 Agency.

567 FOLTZ, S. & DODSON, S. 2009. Aquatic Hemiptera community structure in stormwater  
568 retention ponds: a watershed land cover approach. *Hydrobiologia*, 621, 49-62.

569 FORMAN, R. T. T., SPERLING, D., BISSONETTE, J. A., CLEVENGER, A. P., CUTSHALL, C. D., DALE,  
570 V. H., FAHRIG, L., FRANCE, R. L., GOLDMAN, C. R., HEANUE, K., JONES, J., SWANSON, F.,  
571 TURRENTINE, T. & WINTER, T. C. 2003. *Road Ecology: Science and Solutions*, Island  
572 Press.

573 GARCÍA, L., PARDO, I. & DELGADO, C. 2014. Macroinvertebrate indicators of ecological status  
574 in Mediterranean temporary stream types of the Balearic Islands. *Ecological Indicators*,  
575 45, 650-663.

576 GEE, J. H. R., SMITH, B. D., LEE, K. M. & GRIFFITHS, S. W. 1997. The ecological basis of  
577 freshwater pond management for biodiversity. *Aquatic Conservation: Marine and*  
578 *Freshwater Ecosystems*, 7, 91-104.

579 GIORGIO, A., DE BONIS, S. & GUIDA, M. 2016. Macroinvertebrate and diatom communities as  
580 indicators for the biological assessment of river Picentino (Campania, Italy). *Ecological*  
581 *Indicators*, 64, 85-91.

582 GLEDHILL, D. G., JAMES, P. & DAVIES, D. H. 2008. Pond density as a determinant of aquatic  
583 species richness in an urban landscape. *Landscape Ecology*, 23, 1219-1230.

584 GOTELLI, N. J. & GRAVES, G. R. 1996. *Null Models in Ecology*, Smithsonian Institution Press.

585 GRUNG, M., PETERSEN, K., FJELD, E., ALLAN, I., CHRISTENSEN, J. H., MALMQVIST, L. M. V.,  
586 MELAND, S. & RANNEKLEV, S. 2016. PAH related effects on fish in sedimentation ponds  
587 for road runoff and potential transfer of PAHs from sediment to biota. *Science of The*  
588 *Total Environment*, 566–567, 1309-1317.

589 HASSALL, C. 2014. The ecology and biodiversity of urban ponds. *Wiley Interdisciplinary*  
590 *Reviews: Water*, 1, 187-206.

591 HASSALL, C. & ANDERSON, S. 2015. Stormwater ponds can contain comparable biodiversity to  
592 unmanaged wetlands in urban areas. *Hydrobiologia*, 745, 137-149.

593 HASSALL, C., HOLLINSHEAD, J. & HULL, A. 2011. Environmental correlates of plant and  
594 invertebrate species richness in ponds. *Biodiversity and Conservation*, 20, 3189-3222.

595 HOULAHAN, J. E., KEDDY, P. A., MAKKAY, K. & FINDLAY, C. S. 2006. The effects of adjacent land  
596 use on wetland species richness and community composition. *Wetlands*, 26, 79-96.

597 HSU, C.-B., HSIEH, H.-L., YANG, L., WU, S.-H., CHANG, J.-S., HSIAO, S.-C., SU, H.-C., YEH, C.-H.,  
598 HO, Y.-S. & LIN, H.-J. 2011. Biodiversity of constructed wetlands for wastewater  
599 treatment. *Ecological Engineering*, 37, 1533-1545.

600 HYNES, H. B. N. 1993. *A Key to the Adults and Nymphs of the British Stoneflies (Plecoptera):*  
601 *With Notes on Their Ecology and Distribution*, Ontario, Freshwater Biological Assn.

602 JENSEN, T. C., MELAND, S., SCHARTAU, A. K. & WALSENG, B. 2014. Does road salting confound  
603 the recovery of the microcrustacean community in an acidified lake? *Science of The*  
604 *Total Environment*, 478, 36-47.

605 KARLSSON, K., VIKLANDER, M., SCHOLÉS, L. & REVITT, M. 2010. Heavy metal concentrations  
606 and toxicity in water and sediment from stormwater ponds and sedimentation tanks.  
607 *Journal of Hazardous Materials*, 178, 612-618.

608 KAYHANIAN, M., SINGH, A., SUVERKROPP, C. & BORROUM, S. 2003. Impact of Annual Average  
609 Daily Traffic on Highway Runoff Pollutant Concentrations. *Journal of Environmental  
610 Engineering*, 129, 975-990.

611 LE VIOL, I., MOCQ, J., JULLIARD, R. & KERBIRIOU, C. 2009. The contribution of motorway  
612 stormwater retention ponds to the biodiversity of aquatic macroinvertebrates.  
613 *Biological Conservation*, 142, 3163-3171.

614 LOMOLINO, M. V. 2000. Ecology's most general, yet protean pattern: the species-area  
615 relationship. *Journal of Biogeography*, 27, 17-26.

616 MARSALEK, J., ROCHFORT, Q., BROWNLEE, B., MAYER, T. & SERVOS, M. 1999. An exploratory  
617 study of urban runoff toxicity. *Water Science and Technology*, 39, 33-39.

618 MELAND, S. 2010. *Ecotoxicological Effects of Highway and Tunnel Wash Water Runoff*. PhD-  
619 thesis, Norwegian University of Life Sciences.

620 MELAND, S. 2016. Management of contaminated runoff water: current practice and future  
621 research needs. *Conference of European Directors of Roads (CEDR)*. Brussels.

622 MELAND, S., BORGSTRØM, R., HEIER, L. S., ROSSELAND, B. O., LINDHOLM, O. & SALBU, B.  
623 2010a. Chemical and ecological effects of contaminated tunnel wash water runoff to a  
624 small Norwegian stream. *Science of The Total Environment*, 408, 4107-4117.

625 MELAND, S., DAMSGÅRD, B. M., SKIPPERUD, L. & HEIER, S. L. 2013. Accumulation of Metals  
626 and Metalloids in Larvae of Insects and Frog Living in Wet Sedimentation Ponds  
627 Receiving Runoff from a Four Lane Motorway. In: RAUCH, S., MORRISON, G., NORRA, S.  
628 & SCHLEICHER, N. (eds.) *Urban Environment: Proceedings of the 11th Urban  
629 Environment Symposium (UES), held in Karlsruhe, Germany, 16-19 September 2012*.  
630 Dordrecht: Springer Netherlands.

631 MENETREY, N., SAGER, L., OERTLI, B. & LACHAVANNE, J. B. 2005. Looking for metrics to assess  
632 the trophic state of ponds. Macroinvertebrates and amphibians. *Aquatic Conservation:  
633 Marine and Freshwater Ecosystems*, 15, 653-664.

634 NILSSON, A. N. 1996, 1997. *Aquatic Insects of North Europe: A Taxonomic Handbook*,  
635 Stenstrup, Denmark, Apollo Books.

636 NOBLE, A. & HASSALL, C. 2015. Poor ecological quality of urban ponds in northern England:  
637 causes and consequences. *Urban Ecosystems*, 18, 649-662.

638 OERTLI, B., JOYE, D. A., CASTELLA, E., JUGE, R., CAMBIN, D. & LACHAVANNE, J.-B. 2002. Does  
639 size matter? The relationship between pond area and biodiversity. *Biological  
640 Conservation*, 104, 59-70.

641 PETERSEN, R. 2016. Grenseverdier for klassifisering av vann, sediment og biota - Quality  
642 standards for water, sediment and biota. Miljødirektoratet basert på bakgrunnsdata  
643 fra Aquateam, NIVA og NGI.

644 PHILLIPS, D. P., HUMAN, L. R. D. & ADAMS, J. B. 2015. Wetland plants as indicators of heavy  
645 metal contamination. *Marine Pollution Bulletin*, 92, 227-232.

646 RABAJCZYK, J. N. A. 2010. The speciation and physico-chemical forms of metals in surface  
647 waters and sediments. *Chemical Speciation & Bioavailability*, 22, 1-24.

648 SCHER, O., CHAVAREN, P., DESPREAUX, M. & THIÉRY, A. 2004. Highway stormwater detention  
649 ponds as biodiversity islands? *Archives des Sciences*, 57, 121-130.

650 SCHER, O. & THIÉRY, A. 2005. Odonata, Amphibia and Environmental Characteristics in  
651 Motorway Stormwater Retention Ponds (Southern France). *Hydrobiologia*, 551, 237-  
652 251.

653 SEMADENI-DAVIES, A. 2006. Winter performance of an urban stormwater pond in southern  
654 Sweden. *Hydrological Processes*, 20, 165-182.

655 ŠMILAUER, P. & LEPŠ, J. 2014. *Multivariate Analysis of Ecological Data using Canoco 5*, New  
656 York, Cambridge University Press.

657 STADDON, P., LINDO, Z., CRITTENDEN, P. D., GILBERT, F. & GONZALEZ, A. 2010. Connectivity,  
658 non-random extinction and ecosystem function in experimental metacommunities.  
659 *Ecology Letters*, 13, 543-552.

660 TCHOUNWOU, P. B., YEDJOU, C. G., PATLOLLA, A. K. & SUTTON, D. J. 2012. Heavy Metals  
661 Toxicity and the Environment. *EXS*, 101, 133-164.

662 UNITED STATES ENVIRONMENTAL PROTECTION AGENCY. 2017. *National Recommended Water*  
663 *Quality Criteria - Aquatic Life Criteria Table* [Online]. Available:  
664 [https://www.epa.gov/wqc/national-recommended-water-quality-criteria-aquatic-life-](https://www.epa.gov/wqc/national-recommended-water-quality-criteria-aquatic-life-criteria-table)  
665 [criteria-table](https://www.epa.gov/wqc/national-recommended-water-quality-criteria-aquatic-life-criteria-table) [Accessed 04.20 2017].

666 VAN METER, R. J., SWAN, C. M. & SNODGRASS, J. W. 2011. Salinization alters ecosystem  
667 structure in urban stormwater detention ponds. *Urban Ecosystems*, 14, 723-736.

668 VERHOEVEN, J. T. A., ARHEIMER, B., YIN, C. & HEFTING, M. M. 2006. Regional and global  
669 concerns over wetlands and water quality. *Trends in Ecology & Evolution*, 21, 96-103.

670 VERMONDEN, K., LEUVEN, R. S. E. W., VAN DER VELDE, G., VAN KATWIJK, M. M., ROELOFS, J. G.  
671 M. & JAN HENDRIKS, A. 2009. Urban drainage systems: An undervalued habitat for  
672 aquatic macroinvertebrates. *Biological Conservation*, 142, 1105-1115.

673 VOLLERTSEN, J., ÅSTEBØL, S. O., COWARD, J. E., FAGERAAS, T., MADSEN, H. I., HVITVED-  
674 JACOBSEN, T. & NIELSEN, A. H. 2007. Monitoring and modelling the performance of a  
675 wet pond for treatment of highway runoff in cold climates. In: MORRISON, G. M. &  
676 RAUCH, S. (eds.) *Highway and Urban Environment: Proceedings of the 8th Highway*  
677 *and Urban Environment Symposium*. Dordrecht: Springer Netherlands.

678 WEINER, E. R. 2008. *Applications of Environmental Aquatic Chemistry: A Practical Guide*, CRC  
679 Press.

680 WILLIAMS, P., WHITFIELD, M. & BIGGS, J. 2008. How can we make new ponds biodiverse? A  
681 case study monitored over 7 years. *Hydrobiologia*, 597, 137-148.

682 YANG, J.-L., ZHANG, G.-L., SHI, X.-Z., WANG, H.-J., CAO, Z.-H. & RITSEMA, C. J. 2009. Dynamic  
683 changes of nitrogen and phosphorus losses in ephemeral runoff processes by typical  
684 storm events in Sichuan Basin, Southwest China. *Soil and Tillage Research*, 105, 292-  
685 299.

686

Table 1. Physical variables for the twelve sedimentation ponds surveyed in the present study.

Ponds	Constructed	Size (m <sup>2</sup> ) <sup>a</sup>	No. of ponds <sup>b</sup>	Distance (m) <sup>c</sup>	AADT <sup>d</sup>
Skullerud (SKU)	1998/1999	910	1	980	66500
Taraldrud north (TAN)	2004	780	3	450	42900
Taraldrud crossing (TAK)	2004	1400	6	120	42200
Taraldrud south (TAS)	2004	474	4	130	42200
Nøstvedt (NØS)	2009	340	3	15	35500
Vassum (VAS)	2000	363	5	30	41000
Fiulstad (FIU)	2004	150	3	330	33575
Såstad (SÅS)	2004	80	3	92	33575
Idrettsveien (IDR)	2004/2005	19	3	690	22735
Karlshusbunn (KAB)	2004/2005	87	3	240	22735
Nordby (NOR)	2004/2005	89	8	600	22735
Enebekk (ENE)	2004/2005	132	5	587	23837

<sup>a</sup> Pond surface area

<sup>b</sup> Number of neighbouring ponds within a radius of 1 km

<sup>c</sup> Distance to the nearest neighbouring pond

<sup>d</sup> Annual Average Daily Traffic

Table 2. Variation partitioning analysis representing how much of the variation in the biological community composition could be ascribed to the water quality variables (metals (including  $\text{SO}_4^{2-}$ ), chloride ( $\text{Cl}^-$ ), phosphorus (P), dissolved oxygen (DO) and hydrocarbons) and the physical variables (pond size, average annual daily traffic (AADT), and distance to the nearest neighbouring pond).

Fraction	% of Explained	% of All	$p$ – value
Metals (including $\text{SO}_4^{2-}$ ), $\text{Cl}^-$ , DO, P and hydrocarbons	48%	13%	0.002
Pond size, AADT, and distance to the nearest neighbouring pond	41%	11%	0.002
Shared parts of two groups	11%	3%	0.002



## Figure

[Click here to download Figure: 2nd Revised figures\\_Sun\\_et\\_al.docx](#)

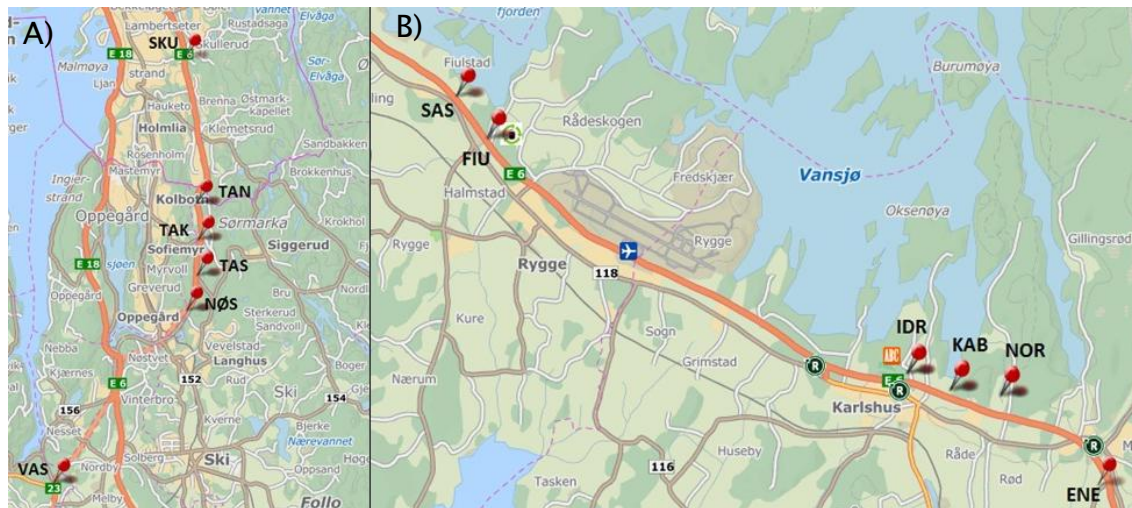


Figure 1. Location of the studied sedimentation ponds (red dots) in Oslo and Akershus county (A) and in Østfold county (B). In A), the ponds are SKU - Skullerud, TAN - Taraldrud north, TAK - Taraldrud crossing, TAS - Taraldrud south, NØS - Nøstvedt, and VAS - Vassum. In B), the ponds are SÅS - Såstad, FIU - Fiulstad, IDR - Idrettsveien, KAB - Karlshusbunn, NOR - Nordby, ENE - Enebekk. The distance between the two farthest ponds (Skullerud and Enebekk) is 71 km.

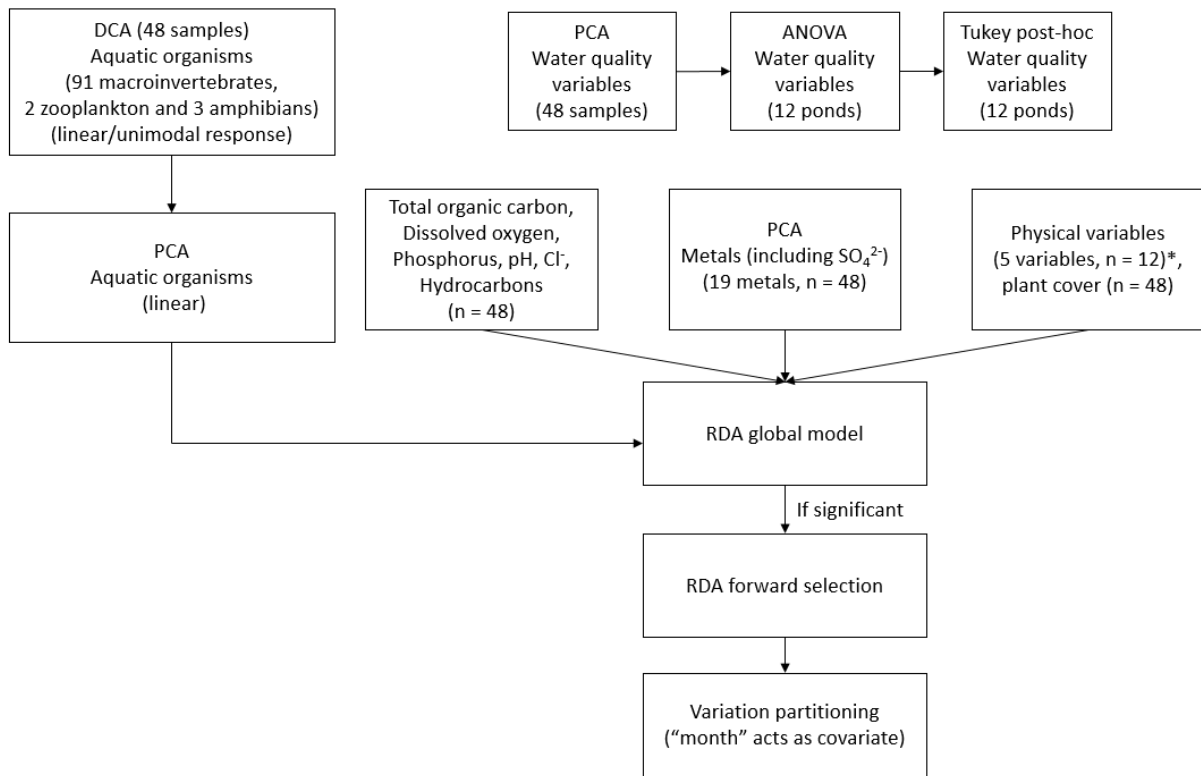


Figure 2. Schematic overview of the methods that were used for the data analysis: DCA - Detrended Correspondence Analysis, PCA - Principal Component Analysis, RDA - Redundancy Analysis, and ANOVA – One-way Analysis of Variance. \* In order to run the model, the physical variables were upscaled to n=48 to match the water quality variables.

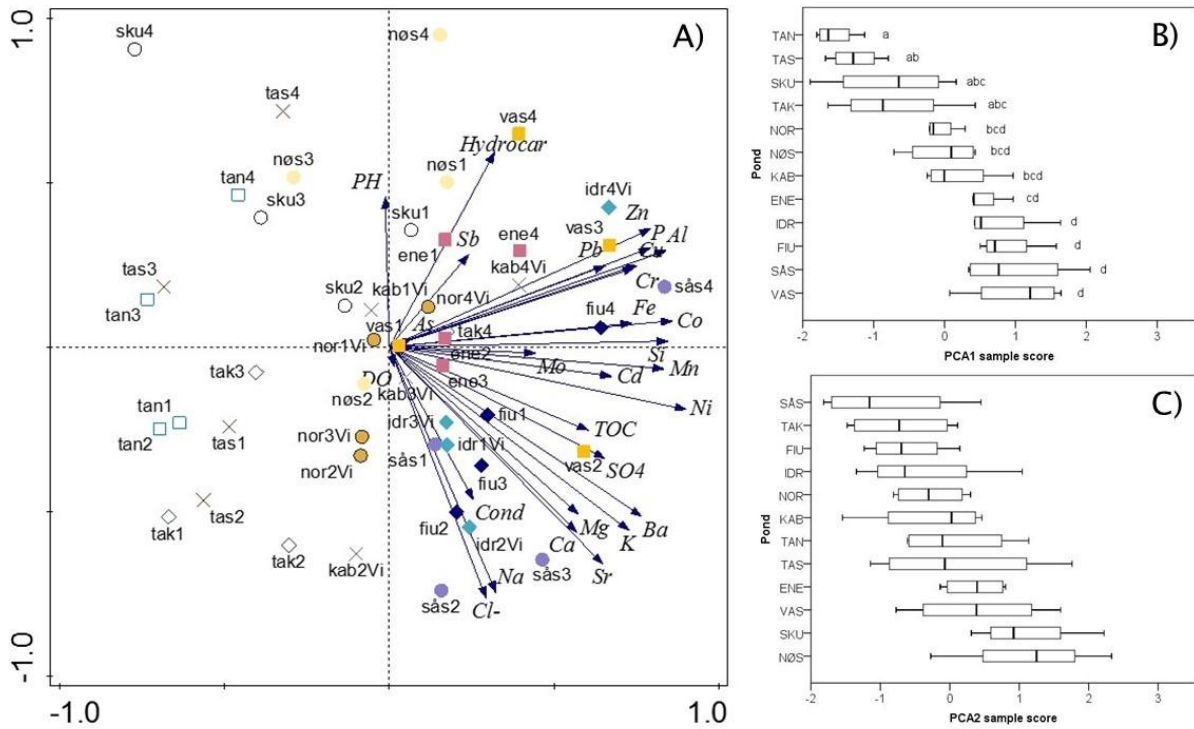


Figure 3. A) Principal components analysis (PCA) for water quality variables. The same symbol with the same colour indicates that samples were collected from the same pond; the first three letters indicate the name of the pond; “1”, “2”, “3” and “4” indicate that the samples were collected in April, June, August and October, respectively; “V” indicates the basin receiving road runoff. B) Box-plot of PCA score extracted from axis 1 for twelve ponds. The small letters besides the boxes indicate which ponds were significantly different from each other. C) Box-plot for PCA score extracted from axis 2 for twelve ponds. None of the ponds were statistically different.

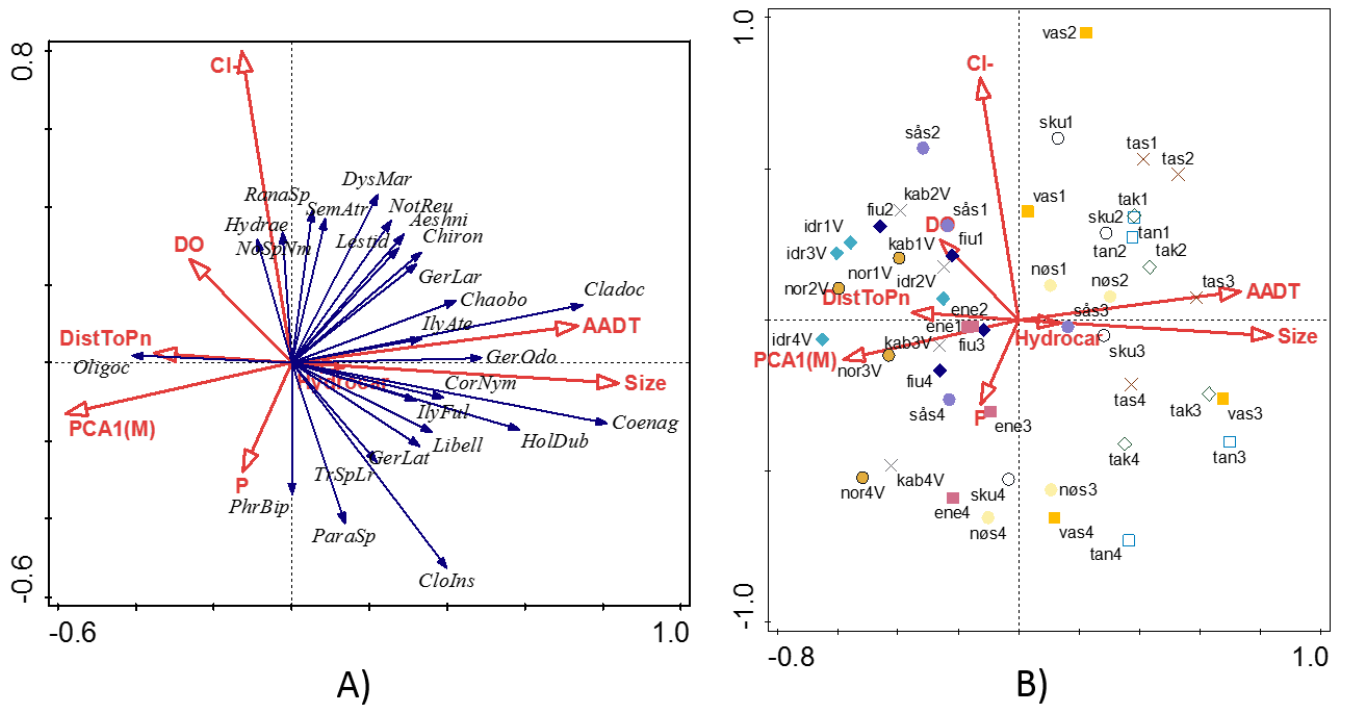


Figure 4. Redundancy analysis (RDA) with forward selection of taxa in relation to the water quality and physical variables. The effect of covariate “month” was removed. PCA1 (M) represents concentrations of metals (including  $\text{SO}_4^{2-}$ ), DO - dissolved oxygen, and P – phosphorus; “DistToPn” represents the distance to the nearest neighbouring pond from each study pond. Blue arrows indicate different taxa. Red arrows indicate explanatory variables. Figure B) describes the relationship between environmental variables and different samples. The same symbol with the same colour indicates that samples were collected from the same pond; the first three letters indicate the name of the pond; “1”, “2”, “3” and “4” indicate that the samples were collected in April, June, August and October, respectively; “V” indicates the basin receiving road runoff.

**Supplementary material for on-line publication only**

[Click here to download Supplementary material for on-line publication only: 2nd Revised supplementary material\\_Sun\\_et\\_al.doc](#)